



4214A1



4234A1



4244A1

Adhesive backed for easy mounting

Allows for custom legends

Legends easily swapped

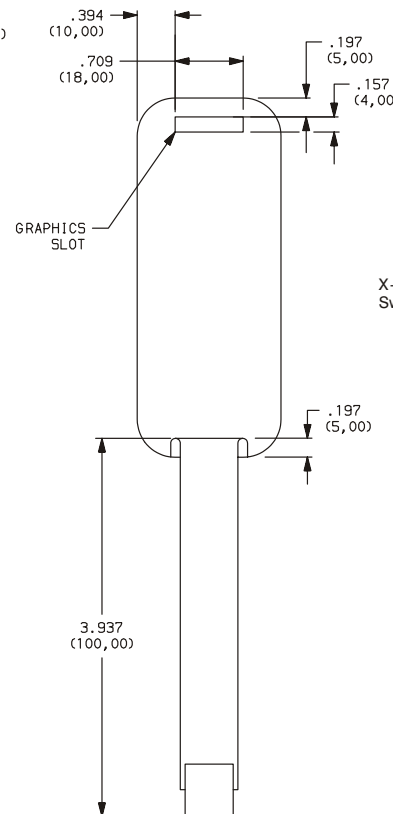
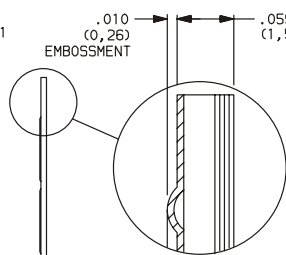
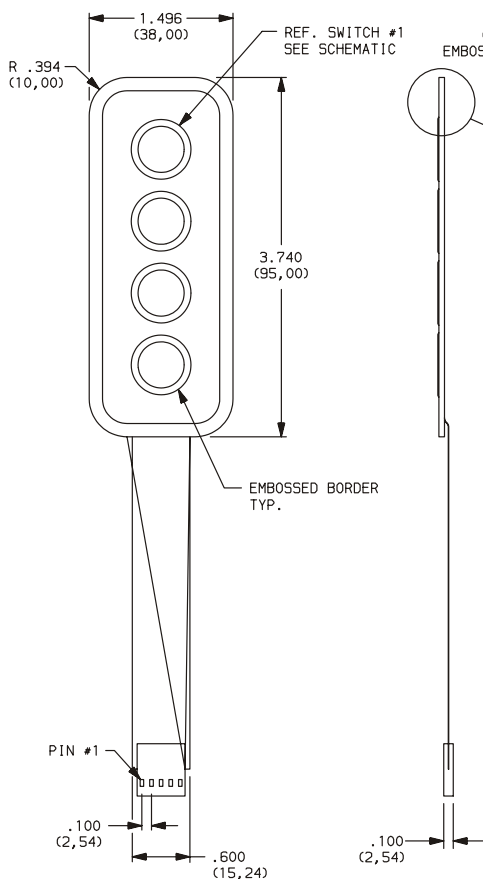
Tactile feedback on all keys

Rim embossed keys for finger placement

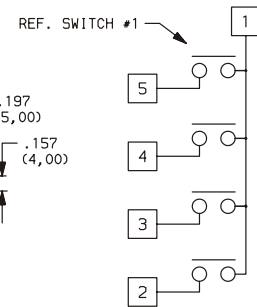
Splashproof, sealed switches

1 x 4 Array, 4 Keys

PART NO.	DETENT	CONNECTOR
4214A1	YES	FEMALE

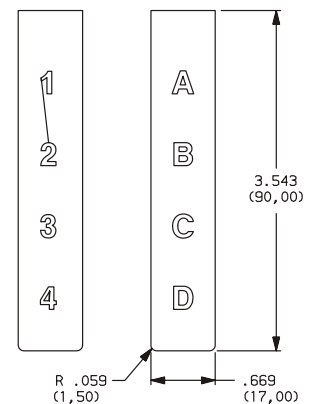


Schematic



X-Y Matrix output circuit configuration
Switch function - SPST N.O. Momentary.

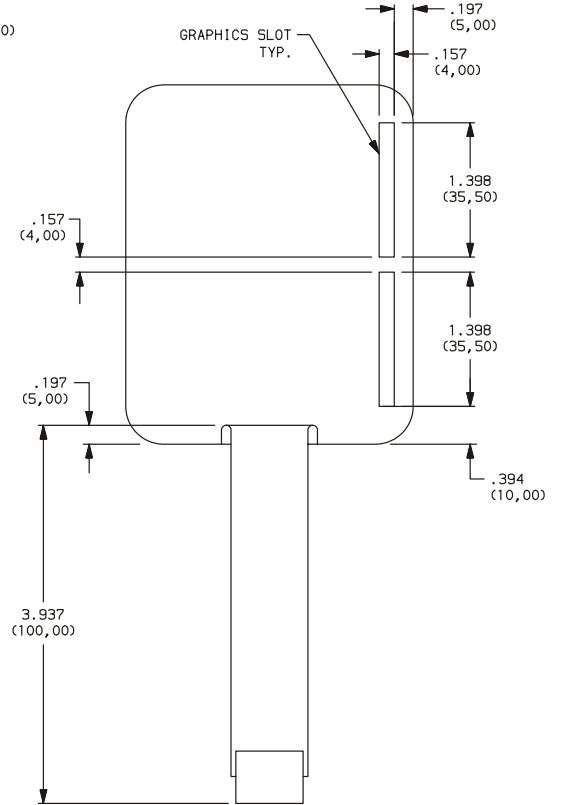
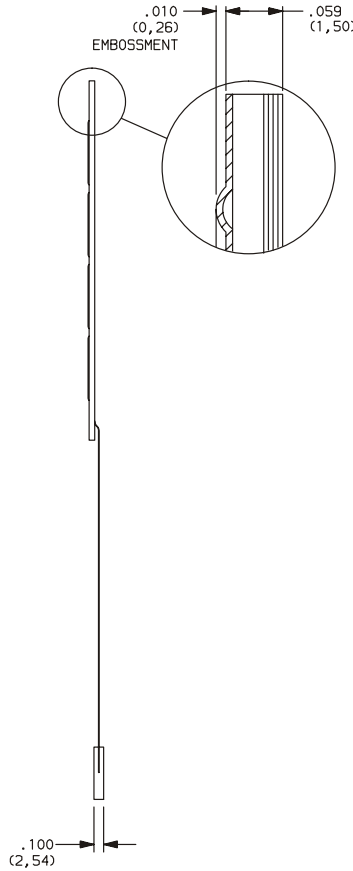
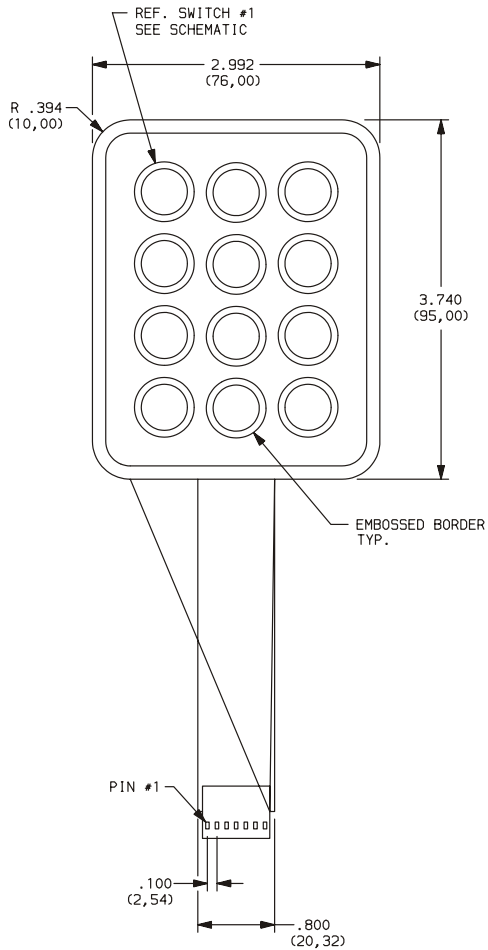
Graphics



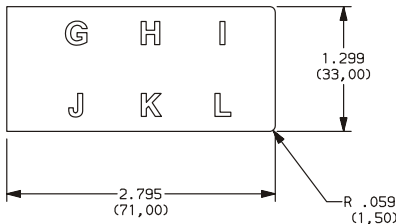
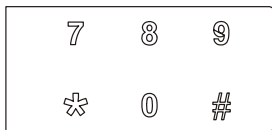
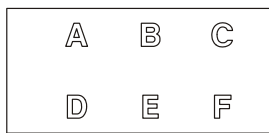
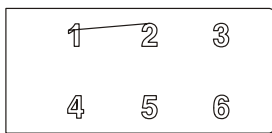
BOTH INSERTS SUPPLIED
WITH EACH KEYPAD

3 x 4 Array, 12 Keys

PART NO.	DETENT	CONNECTOR
4234A1	YES	FEMALE

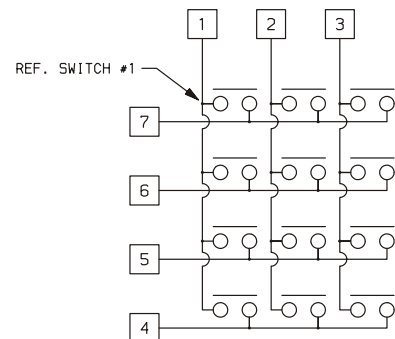


Graphics



ALL (4) INSERTS SUPPLIED WITH EACH KEYPAD

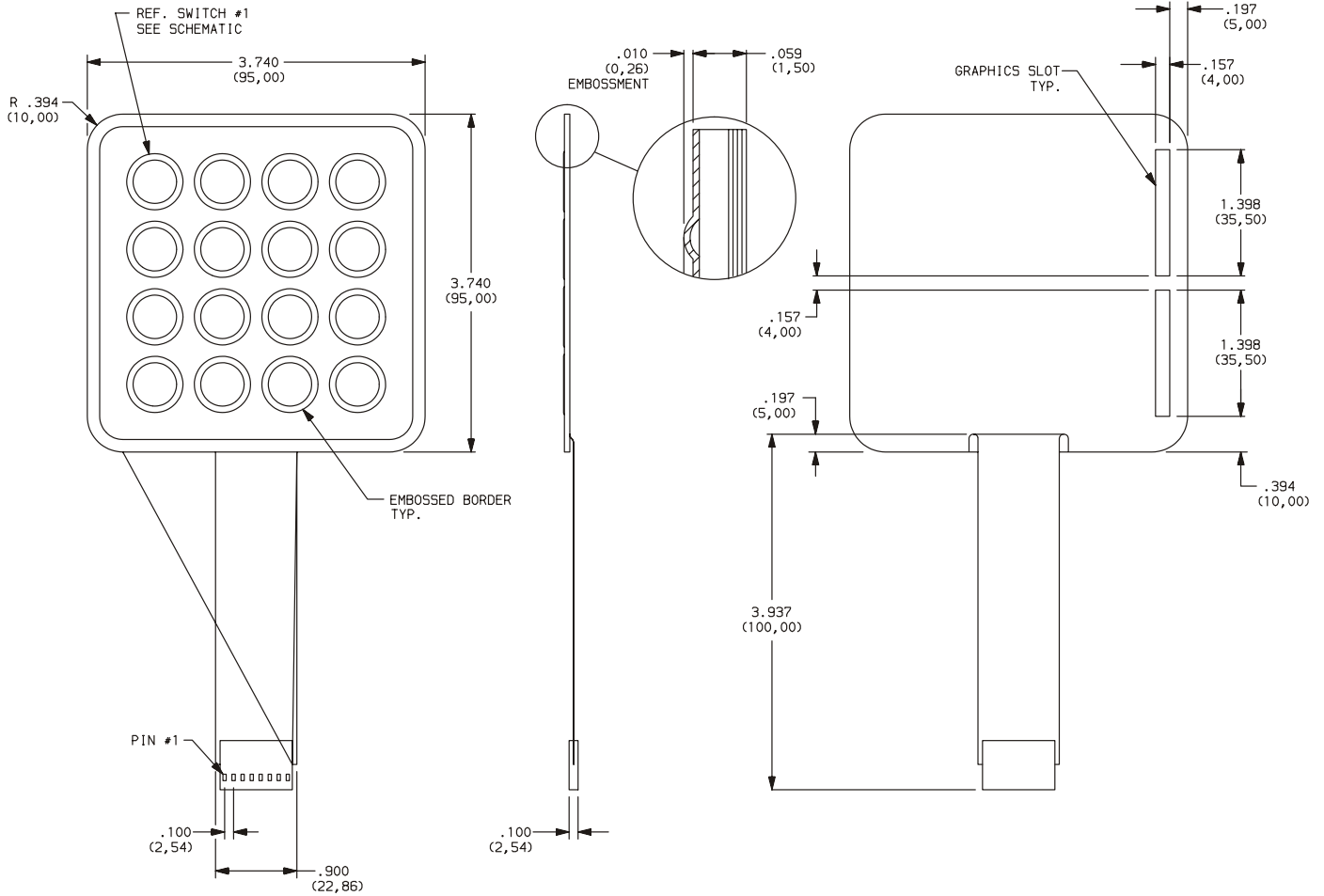
Schematic



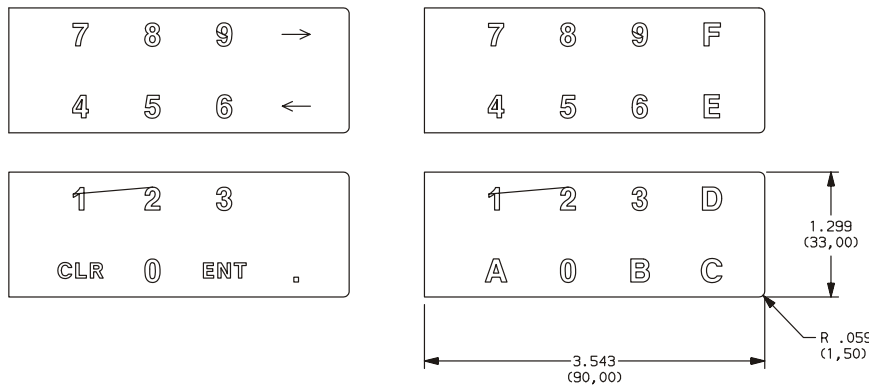
X-Y Matrix output circuit configuration
Switch function - SPST N.O. Momentary.

4 x 4 Array, 16 Keys

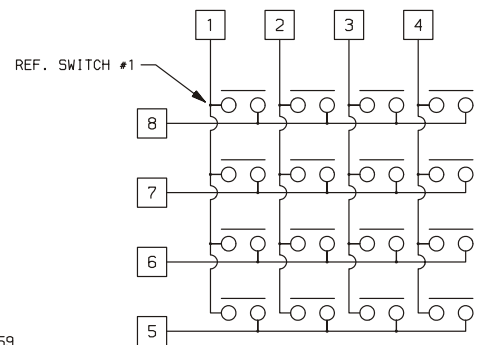
PART NO.	DETENT	CONNECTOR
4244A1	YES	FEMALE



Graphics



Schematic



X-Y Matrix output circuit configuration
Switch function - SPST N.O. Momentary.

ALL (4) INSERTS SUPPLIED WITH EACH KEYPAD



HOW TO ORDER

Please email Sales@IN2TEC.com or Fax your requirements to SALES +44 (0) 1536 419222

SPECIFICATIONS

SWITCH FUNCTION: SPST, momentary, normally open.

CONTACT RATING: 0.5 VA, 100 mA, 30 V DC max.

ACTUATION FORCE: 300 – 500 grams.

INSULATION RESISTANCE: 5 megohms min.

DIELECTRIC STRENGTH: 250 V RMS min.

CAPACITANCE: 10 pF typ.

CONTACT BOUNCE: Below 10 msec. typ.

TRAVEL: 0.63 – 0.76mm (0,025 – 0,030) typ.

STORAGE TEMPERATURE: –40 °C to 60 °C.

OPERATING TEMPERATURE: –30 °C to 60 °C.

MATERIALS

OVERLAY: Polyester/polycarbonate blend with uniform low gloss fine texture.

CONTACTS AND CIRCUITS: Silver conductive PTF traces on heat stabilized polyester film.

CONNECTOR: Single row female connector, tin lead plating.

NOTE: Specifications and materials listed above are general specifications. Specifications available for specific and custom switches, consult factory.