

KE2024 KEYES LM35 temperature sensor module

Parameters:

Working Voltage: 5VDC

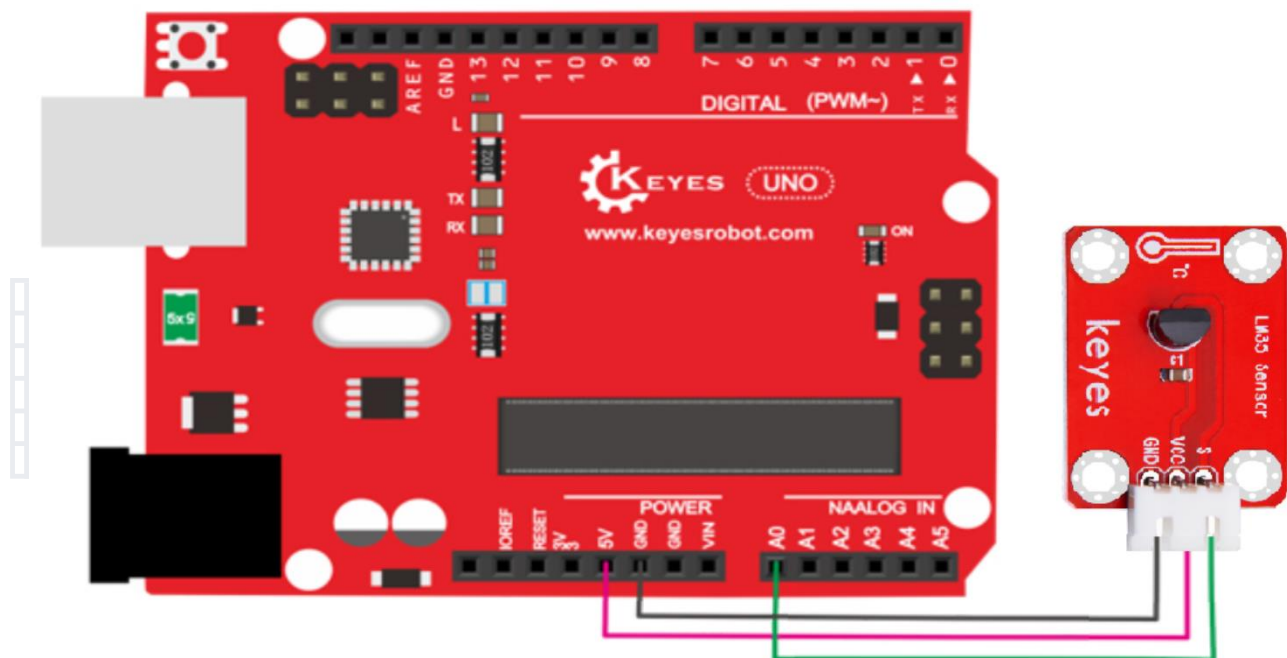
Temp Range: $-40 \sim 110^{\circ}\text{C} \pm 0.25^{\circ}\text{C}$

Colour: Red

Size: 34x22x9mm.



PINOUT Instruction:



Sample Code:

```
void setup()
{
  Serial.begin(9600);//Set Baud Rate to 9600 bps
}

void loop()
{
  unsigned int val;
  unsigned int dat;
  val=analogRead(0);//Connect LM35 on Analog 0
  dat=(500 * val) /1024;;
  Serial.print("Temp:"); //Display the temperature on Serial monitor
  Serial.print(dat);
  Serial.println("°C");
  delay(500);
}
```

Result:

Wire it up as the above diagram and upload well the code to the board, then open the serial monitor and set the baud rate as 9600, finally you will see the current temperature value shown below. The value may be slight difference due to different place and weather.

