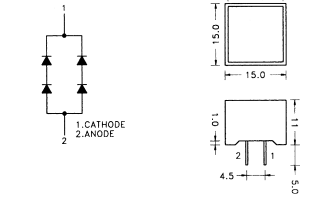
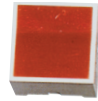




LED & Holders & Photo Interrupter

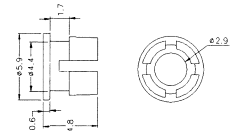
R787830

LED LIGHT BAR (15mm X 15mm)
 B : HI-RED (660nm 8mcd)
 C : GREEN (565nm 6mcd)
 D : YELLOW (585nm 4mcd)



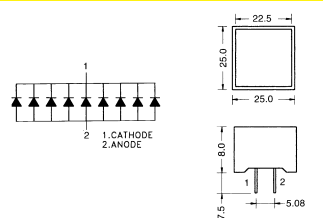
R787861

3mm LED HOLDER (W/O LED)



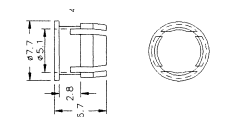
R787831

LED LIGHT BAR (25mm X 25mm)
 B : HI-RED (660nm 8.0mcd)
 C : GREEN (565nm 1.5mcd)
 D : YELLOW (585nm 1.5mcd)



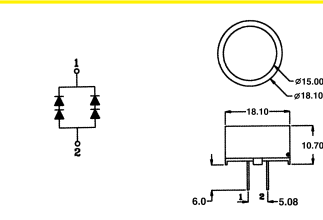
R78786A (R787860)

5mm LED HOLDER (W/O LED)



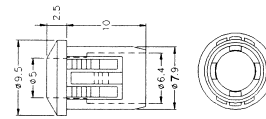
R787834

18mm ROUND LIGHT BAR
 B : HI-Effi. RED (660nm 8.0mcd)
 C : GREEN (565nm 1.5mcd)
 D : YELLOW (585nm 1.5mcd)



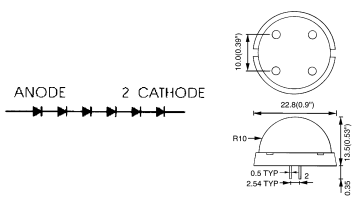
R787862

5mm LED HOLDER (W/O LED)



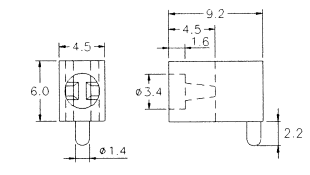
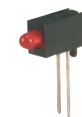
R787837

20mm JUMBO LED LAMP
 B : HI-Effi. RED (630nm 30mcd)
 C : GREEN (565nm 30mcd)
 D : YELLOW (585nm 25mcd)



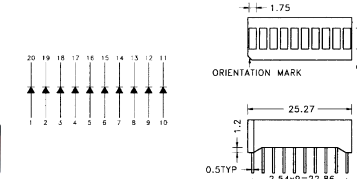
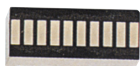
R787865

3mm LED HOLDER (W/O LED)



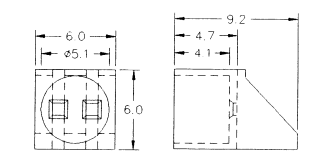
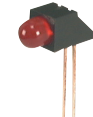
R787840

10 BAR GRAPHIC DISPLAY
 B : HI-RED (697nm 0.9mcd)
 C : GREEN (565nm 4.0mcd)
 D : YELLOW (585nm 3.0mcd)



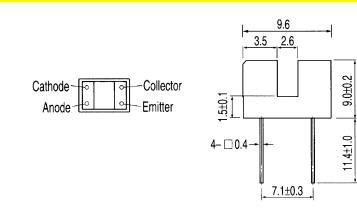
R787866

5mm LED HOLDER (W/O LED)



R787851

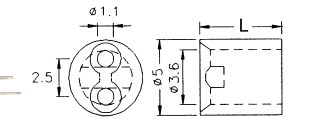
PHOTO INTERRUPTER



R787880

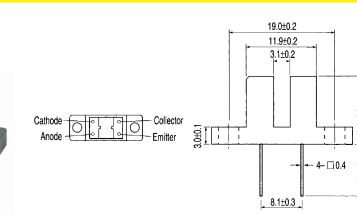
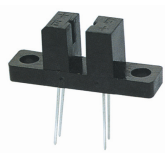
5mm LED HOLDER (W/O LED)

D : L = 5.0 mm
 E : L = 6.0 mm
 F : L = 7.0 mm
 G : L = 8.0 mm
 H : L = 9.0 mm
 J : L = 10.0 mm
 M : L = 12.0 mm



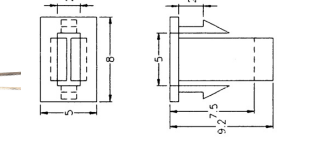
R787852

PHOTO INTERRUPTER



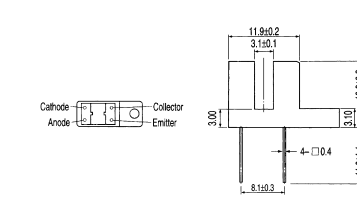
R787890

5 X 2mm LED HOLDER (W/O LED)



R787853

PHOTO INTERRUPTER



R787854

PHOTO INTERRUPTER

