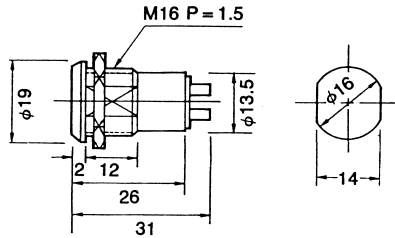




Keylock Switches

B0960 - B0961
KEYLOCK SWITCH
125V 1A (250V 0.5A)

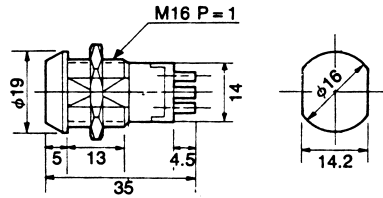
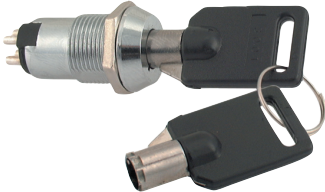


ZINC ALLOY DIE CAST HOUSING

ITEM#	TERMINALS	KEY PULLS	TURN			
B0960	2	2	90°	OFF	ON	
B0961	3	3	120°	OFF	ON	ON

• 10 COMBINATIONS AVAILABLE

B0962 - B0965
KEYLOCK SWITCH
125V 3A (250V 1.5A)

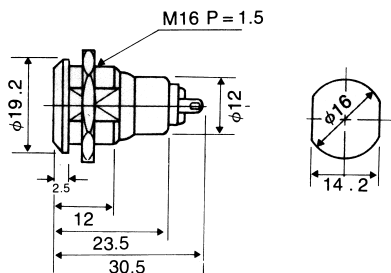
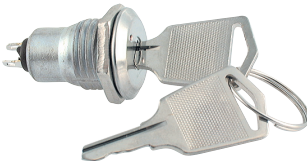


ZINC ALLOY DIE CAST HOUSING

ITEM#	TERMINALS	KEY PULLS	TURN			
B0962	4	1	90°	ON	ON	
B0963	4	2	90°	ON	ON	
B0964	6	1	90°	ON	ON	
B0965	6	2	90°	ON	ON	

• MANY COMBINATIONS AVAILABLE

B0970 - B0971
KEYLOCK SWITCH
125V 1A (250V 0.5A)

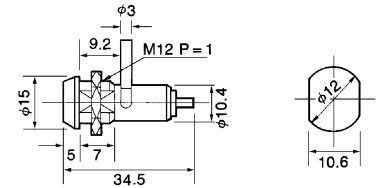
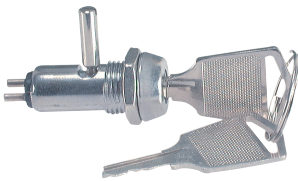


ZINC ALLOY DIE CAST HOUSING

ITEM#	TERMINALS	KEY PULLS	TURN			
B0970	2	1	90°	OFF	ON	
B0971	2	2	90°	OFF	ON	

• 20 COMBINATIONS AVAILABLE

B0975
KEYLOCK SWITCH
125V 1A (250V 0.5A)

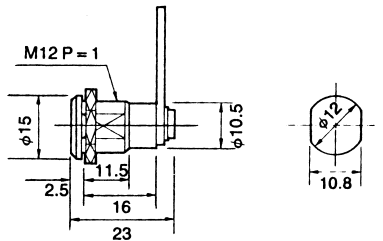


ZINC ALLOY DIE CAST HOUSING

ITEM#	TERMINALS	KEY PULLS	TURN			
B0975	2	2	90°	OFF	ON	

• 20 COMBINATIONS AVAILABLE

B0980 - B0981
CAM LOCK

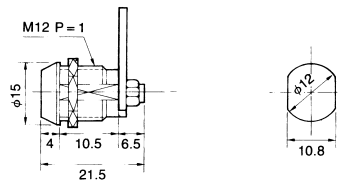
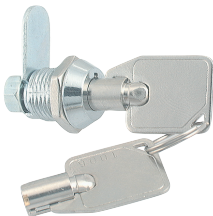


ZINC ALLOY DIE CAST HOUSING

ITEM#	TERMINALS	KEY PULLS	TURN			
B0980		1	90°			
B0981		2	90°			

• 20 COMBINATIONS AVAILABLE

B0982 - B0983
CAM LOCK

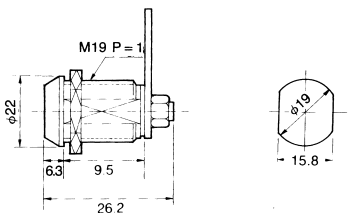


ZINC ALLOY DIE CAST HOUSING

ITEM#	TERMINALS	KEY PULLS	TURN			
B0982		1	90°			
B0983		2	90°			

• 200 COMBINATIONS AVAILABLE

B0984 - B0985
CAM LOCK



ZINC ALLOY DIE CAST HOUSING

ITEM#	TERMINALS	KEY PULLS	TURN			
B0984		1	90°			
B0985		2	90°			

• MANY COMBINATIONS AVAILABLE