

# 三兴达微型电机有限公司

## 样品承认书

客 户：         万宝刚        


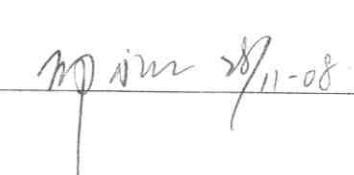
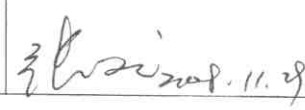
电机型号：         SFE-020S-09170-25.5        

样品编号：         80183/A081128-6        

用 途：         SSP020S-09170-25.5-01        

本司签章：

日期：2008年11月28日

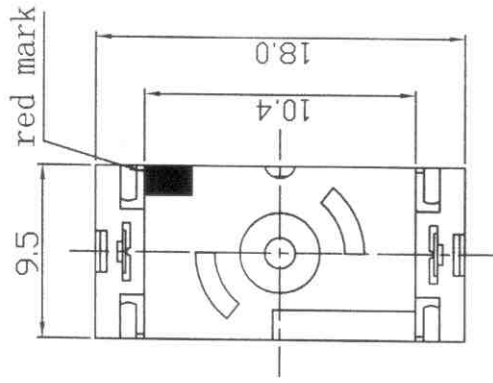
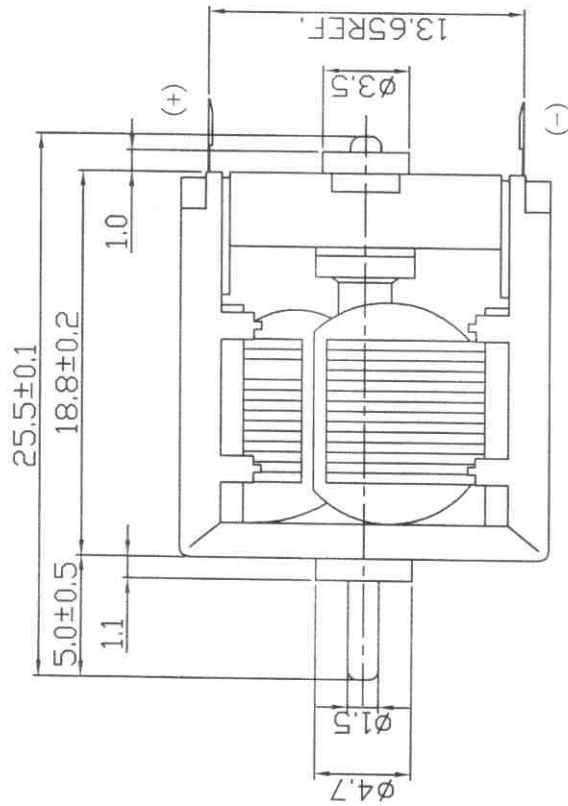
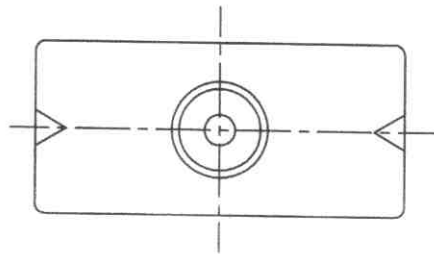
检 查	核 对	承 认
		

客户承认签章：

检 查	核 对	承 认

版次: A

DIRECTION OF ROTATION



未注公差		圆角半径和倒角高度	
0~6	6~30	0~3	3~6
±0.06	±0.1	±0.2	±0.5
			±0.8

说明:

1. 电机转向为CW, 电压3.0V
2. 样板编号: A081128-6.
3. 马达盖红点处端子接正极.

TITLE: 外形图

A4

DRAWER: 王树新

MUSTER NO:

SFE-020S-09170-25.5



CHECKER: 王树新 2011-08

APPROVER: 王树新 2011.11.29



SAM XING DA

ELECTRIC MFG. CO., LTD.

共5页 第5页

DO NOT SCALE THE DAWING

DRAWING NO.:

6

5

4

3

2

1

D

C

B

A

D

6

5

4

3

2

1



# 三兴达微型电机有限公司

## SAN XING DA ELECTRIC MFG CO., LTD.

### Graph drawing

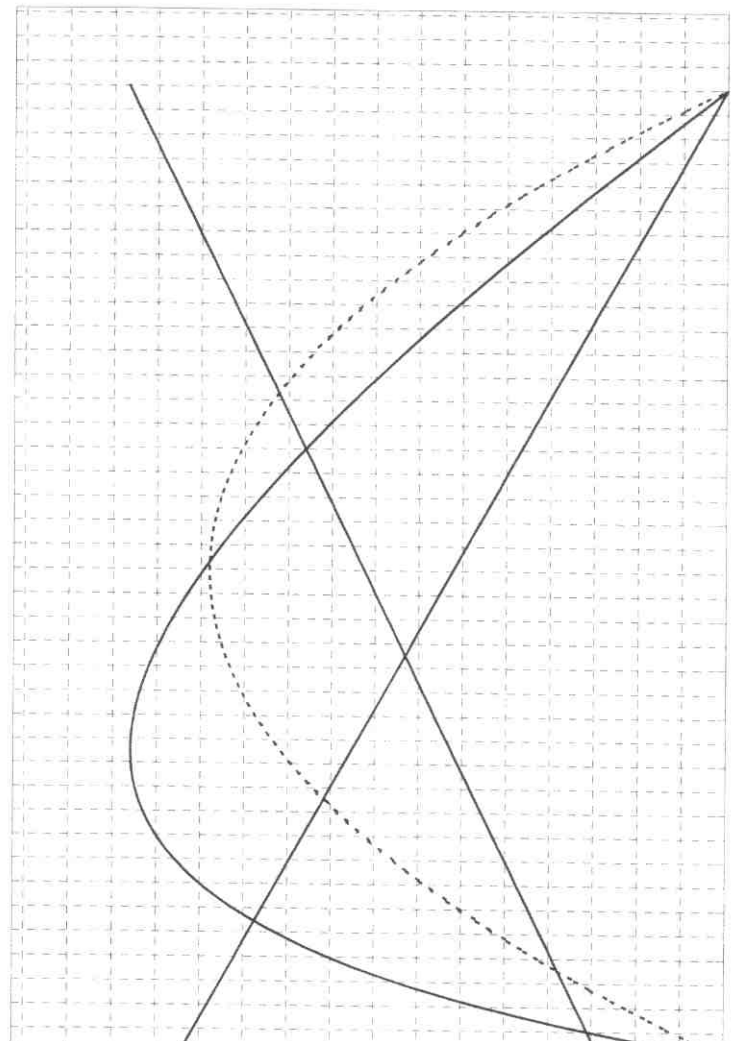
Sample No: 80183/A081128-6  
 Model: SFE-020S-09170-25.5

Customer: 万宝刚

Date: 2008-11-28

Efficiency  
 Power output

$\eta$	P	I	N
60	0.45	0.45	11100
40	0.30	0.30	7400
20	0.15	0.15	3700
0	0	0	0



(NOTE: 1mN-m = 10.2g-cm)

共5页 第4页

NOTE: Performance (in an ambient temperature of 25-30°C)  
 Motor tested rapidly to prevent significant temperature rise.

Constant voltage: 3.0 Volts  
 Direction: CW

At No Load  
 Speed: 9200 rpm  
 Current: 0.085 A

At stall (Extrapolated)  
 Torque: 15.0 g-cm  
 Current: 0.41 A

At maximum efficiency  
 Efficiency: 54.4 %  
 Torque: 4.7 g-cm  
 Speed: 6317 rpm  
 Current: 0.19 A  
 Output: 0.30 W

At maximum Power output  
 Output: 0.35 W  
 Torque: 7.5 g-cm  
 Speed: 4600 rpm  
 Current: 0.25 A

Issued by QA Reliability Testing Center  
 COMPUTER PRINT-OUT  
 NOMINAL MOTOR CURVES  
 Performance and characteristics are measured based on limited motor samples only

Prepared by: 丁丁

Checked by: MAM

Approved by: jhz

Date: 2008.11.29

