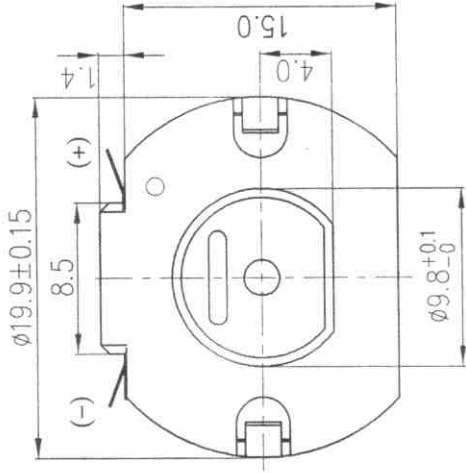
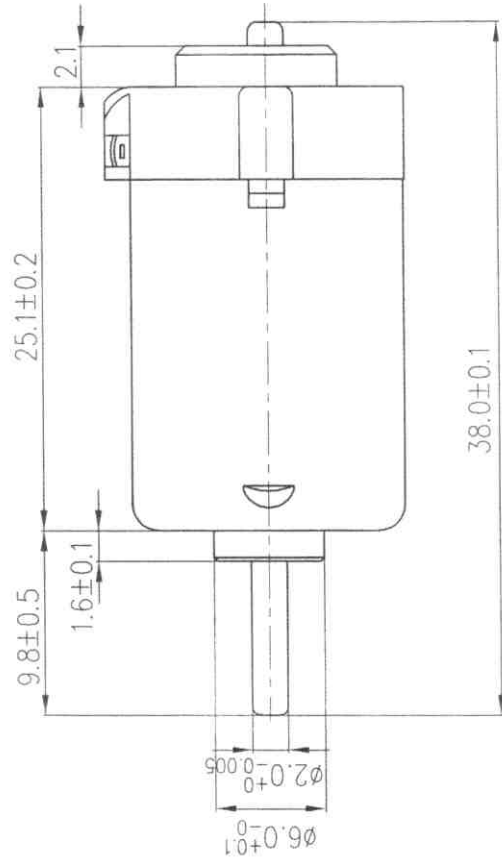
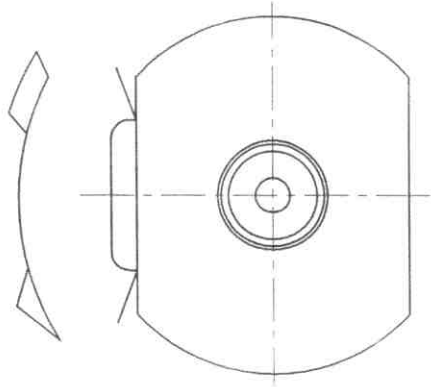


版次: A

1 2 3 4 5 6

未注公差		圆角半径和倒角高度	
0~6	6~30	30~120	0~3
±0.06	±0.1	±0.2	±0.5
			±0.8

DIRECTION OF ROTATION



说明:

1. 马达胶盖小圆圈处端子接正极.
2. 额定电压: 3.0V, 转向CCW.
3. 样板编号: 80178/A081128-1.

TITLE: 外形图	A4	DRAWER: 丁杨利
MUSTER NO: SFE-130W-14150-38		CHECKER: 孙文 18/11-05
		APPROVER: 孙文 2008.11.29
DO NOT SCALE THE DRAWING		
 <b>SAN XING DA</b> ELECTRIC MFG.CO.,LTD.		DRAWING NO:

共5页 第5页

1 2 3 4 5 6



# 三兴达微型电机有限公司

## SAN XING DA ELECTRIC MFG CO., LTD.

### Graph drawing

Sample No: 80178/A081128-1

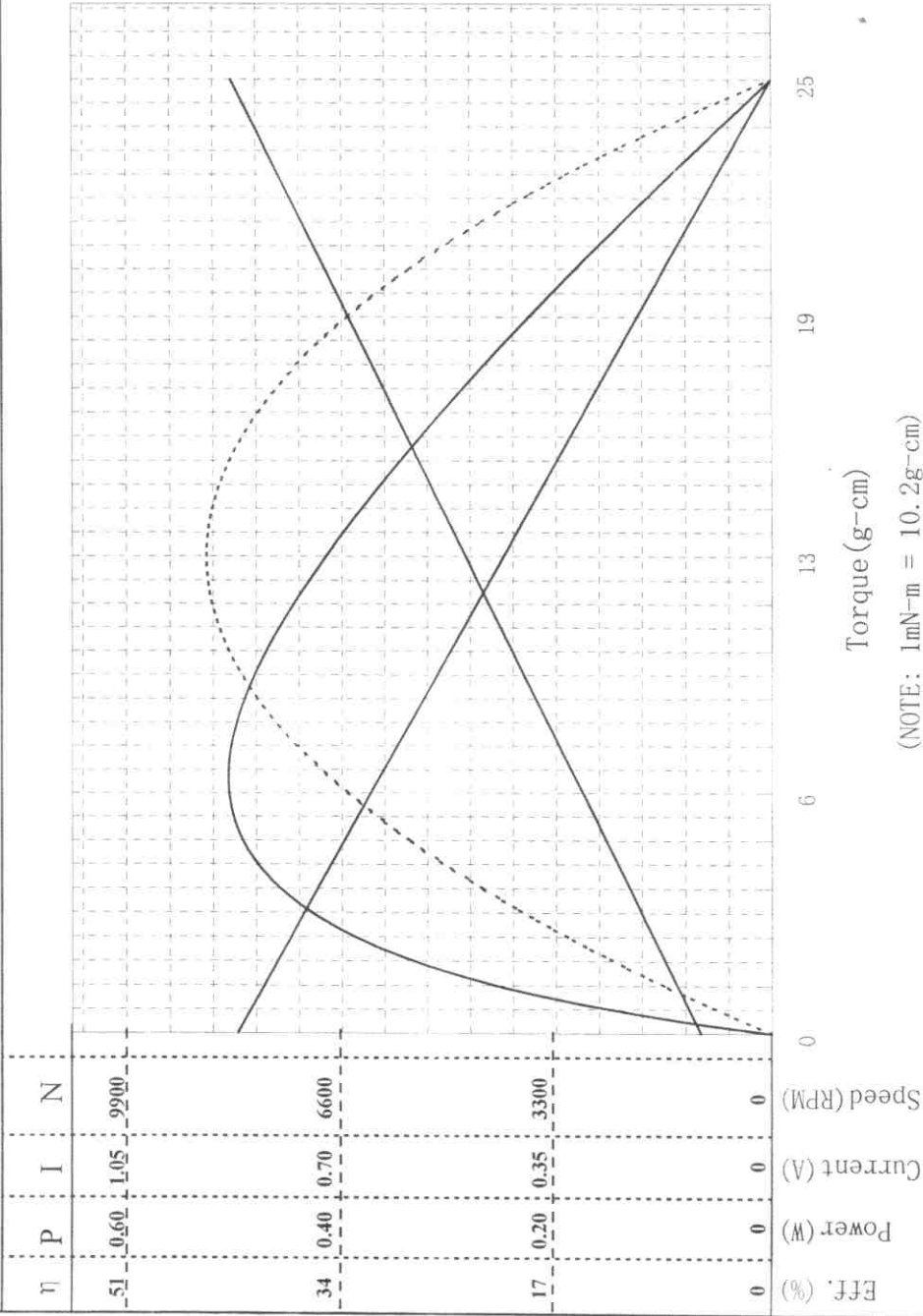
Customer: 万宝刚

Date: 2008-11-28

Model: SFE-130W-14150-38

Efficiency

Power output



(NOTE: 1mN-m = 10.2g-cm)

共 5 页 第 4 页

NOTE: Performance (in an ambient temperature of 25-30°C)  
Motor tested rapidly to prevent significant temperature rise.

Constant voltage: 3.0 Volts  
Direction: CCW

At No Load  
Speed: 8200 rpm  
Current: 0.115 A

At stall (Extrapolated)  
Torque: 25.0 g-cm  
Current: 0.88 A

At maximum efficiency  
Efficiency: 43.0 %  
Torque: 6.8 g-cm  
Speed: 5970 rpm

At maximum Power output  
Current: 0.32 A  
Output: 0.42 W

Output: 0.53 W  
Torque: 12.5 g-cm  
Speed: 4100 rpm  
Current: 0.50 A

Issued by QA Reliability Testing Center

COMPUTER PRINT-OUT

NOMINAL MOTOR CURVES

Performance and characteristics are measured based on limited motor samples only

Prepared by: [Signature]

Checked by: [Signature] Approved by: [Signature]

Date: 2008-11-29

# 三兴达微型电机有限公司

## 样品承认书

客 户：      万宝刚      



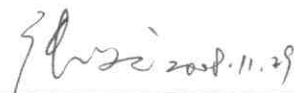
电机型号：  SFE-130W-14150-38  

样品编号：  80178/A081128-1  

用 途：  S130-14150-38Z-02  

本司签章：

日期：2008 年 11 月 28 日

检 查	核 对	承 认
		

客户承认签章：

检 查	核 对	承 认

