



STANDARD

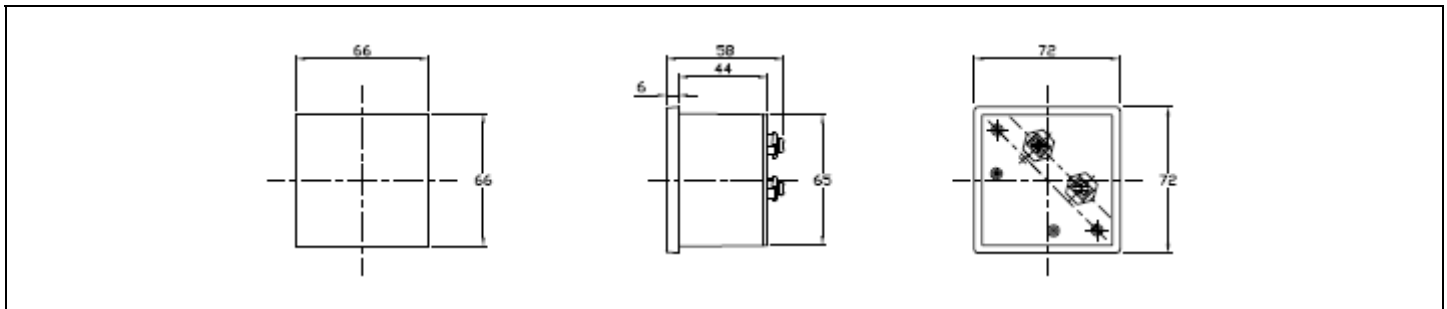
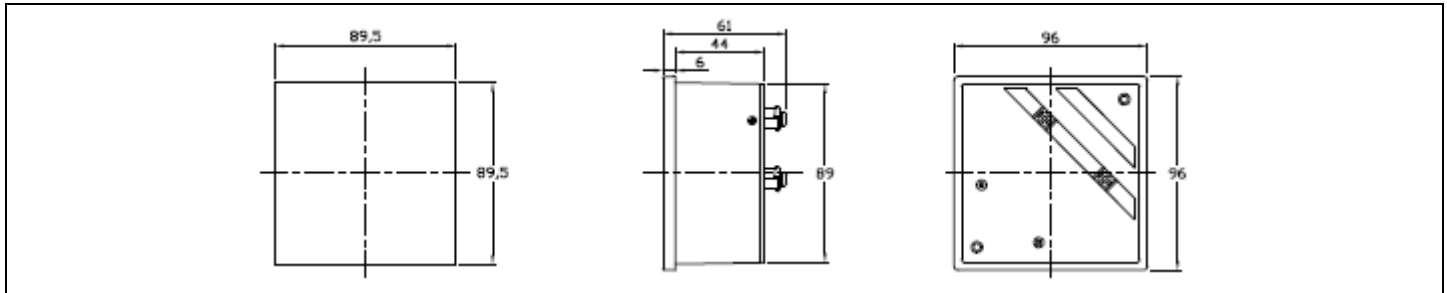
SWITCHBOARD INSTRUMENT



ST-96



ST-72



Measuring Ranges :

Moving Coil Type

DC μ A	DC mA	DC A	DC mV	DC V
50	1	1	50	1
100	1.5	1.5	60	1.5
150	2.5	2.5	100	2.5
200	3	3	500	3
250	5	5		5
300	10	10		10
400	50	15		15
500	100	20		20
600	500	25		25
800	800	30		30
		40		40
		50		100
		60		150
				200
				300
				400
				600

Moving Iron Type

AC mA	AC A	AC V
100	1	100
500	1.5	150
	2.5	250
	5	300
	10	500
	15	600
	20	
	25	
	30	
	40	
	60	
	100	

- **Test Voltage :** 2kV 50-60Hz
- **AC Ampere Over Load Scale :** 200%,300%,500%
- **Composition :** Glass Window, ABS resin frame and case, Bakelite base
- **Color :** Black case and frame, white scale plate and meter body
- **Pointer :** Stick shape in black color
- **Pointer Length :** ST-96 : 55mm
ST-72 : 38mm

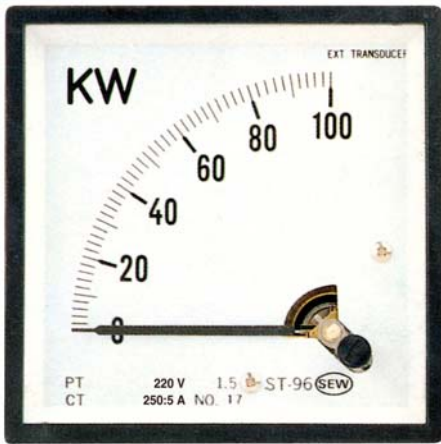
AC Ammeters above 100A require a basic meter combined with an external CT (Current Transformer) | AC Voltmeters above 600 Volts require a basic 150V meter combined with an external PT(Potential Transformer) | DC Ammeters above 50A require a basic 50mV meter combined with an external shunt

Measuring range	CT ratio	Measuring range	CT ratio	Measuring range	PT ratio	For connection to shunt measuring range		
0-5 A		0-250 A	250/5	0-300V	220/110 V	0-0.5A	0-100 A	0-1200 A
0-10 A	10/5	0-300 A	300/5	0-600V	440/110 V	0-7.5A	0-150 A	0-1500 A
0-15 A	15/5	0-400 A	400/5	0-4.5 kV	3300/110 V	0-10 A	0-200 A	0-2000 A
0-20 A	20/5	0-500 A	500/5	0-9 kV	6600/110 V	0-15 A	0-300 A	0-3000 A
0-25 A	25/5	0-600 A	600/5	0-18 kV	13200/110 V	0-20 A	0-400 A	0-4000 A
0-30 A	30/5	0-750 A	750/5	0-30 kV	22000/110 V	0-30 A	0-500 A	0-5000 A
0-40 A	40/5	0-800 A	800/5	0-45 kV	33000/110 V	0-40 A	0-600 A	0-6000 A
0-50 A	50/5	0-1000 A	1000/5			0-50 A	0-750 A	0-7000 A
0-60 A	60/5	0-1200 A	1200/5			0-75 A	0-1000 A	0-10000 A
0-75 A	75/5	0-1500 A	1500/5					
0-100 A	100/5	0-2000 A	2000/5					
0-150 A	150/5	0-2500 A	2500/5					
0-200 A	200/5	0-3000 A	3000/5					



STANDARD

SWITCHBOARD INSTRUMENT



**ST-72
ST-96 KW Meter**

ST-96 and ST-72 KW instruments are used for measuring the active and reactive power of AC single and three phase networks. They are primarily built in switchboards and electric devices.

- **Measuring Range :** 110V,220V,380V,440V/1A,5A
- **Accuracy :** Class 1.5
- **Frequency :** 45-65 Hz
- **Test Voltage :** 2 kV,50-60 Hz
- **Pointer Length :** ST-96 : 55mm
ST-72 : 38mm
- **Composition :** Glass window, ABS resin frame and case, Bakelite base mounting fitting included
- **Color :** Black base and frame, white scale plate and meter body
- **Pointer :** Stick shape in black color
- **Transducer :** External



**ST-72
ST-96 Hz Meter**

ST-96 and ST-72 Hz instruments are suitable for frequency measurements from AC current networks and can be used in power engineering systems, power plants, switch and test rooms. They can be built in switchboards, measuring desks and electrical equipments.

- **Measuring Range :** 45-55Hz
- **Accuracy :** Class 1.5
- **Working Position :** Vertical
- **Rated Voltage :** 110V,220V,380V,440V
- **Limit Of Voltage Fluctuation :** $\pm 20\%$
- **Consumption :** Max. 15mA
- **Test Voltage :** 2 kV,50-60 Hz
- **Pointer Length :** ST-96 : 55mm
ST-72 : 38mm
- **Composition :** Glass window, ABS resin frame and case, Bakelite base mounting fitting included
- **Color :** Black base and frame, white scale plate and meter body
- **Pointer :** Stick shape in black color



ST-96 COSφ Meter

ST-96 COSφ instruments are used for measuring the power factor of AC single and three phase networks. They are also built primarily in switchboards and electric devices.

- **Measuring Range :** 110V, 220V 380V, 440V/1A, 5A
- **Accuracy :** $\pm 5^\circ$ phase angle
- **Frequency :** 45~65Hz
- **Test Voltage :** 2 kV,50-60 Hz
- **Pointer Length :** 55mm
- **Composition :** Glass window, ABS resin frame and case, Bakelite base mounting fitting included
- **Color :** Black base and frame, white scale plate and meter body
- **Pointer :** Stick shape in black color