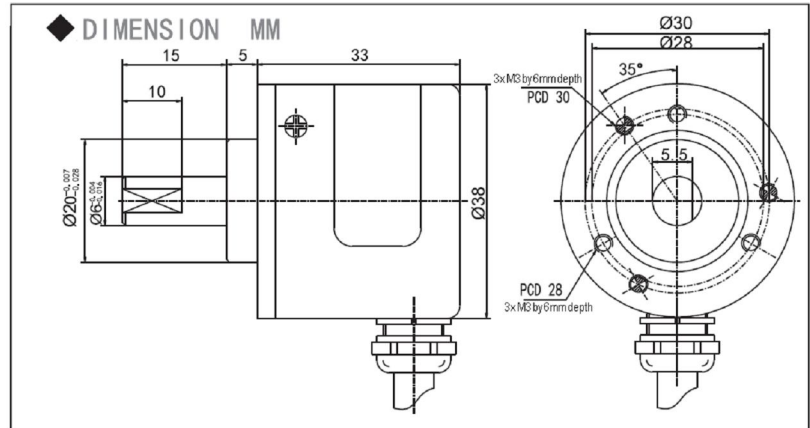


B38S SERIES



◆ APPLICATION, FEATURES

◆ DESIGNATE THE NAME OF FUNCTION WHEN ORDERING

B38S — 06	G	5	L	200	B	M
SIZE Ø38mm	OUTPUT G= Cable out C= socket out E= cable black	VOLTAGE 5=+5V 526=+5~+26V	OUTPUT MODE E=NPN+R C=NPN F=PNP+NPN L=(26LS31) O=(7272) V=OC (7273)	RESOLUTION P/R 10-2500	ZERO SIGNAL NIL = no M = OP " 1 " N = OP " 0 "	OUTPUT B:2Phase OUTPUT A,B
AXIS 05=Ø5mm 06=Ø6mm						

◆ ELECTRICAL SPEC

mode	collector open output	output volt	compensation output	driving output
source volt. Vcc	5~26	5~26	5±0.25 5~26	5±0.25 5~26
operating current	≤80mA	≤80mA	≤80mA	≤150mA
loading current	40mA	40mA	40mA	60mA
high level volt	Vcc*70%	Vcc-2.5V	Vcc-1.5V	3.4V
low level volt	0.4V	0.4V	0.8V	0.4V
rising time	MAX 1us	MAX 1us	MAX 1us	MAX 200ns
falling time	MAX 1us	MAX 1us	MAX 1us	MAX 200ns
max freq. response	300kHz	300kHz	300kHz	300kHz

◆ MECHANICAL SPEC

max RPM	starting torque	max loading	impact	vibration resist
6000	<0.05Nm	20N	50G/11ms	10G 10-2000Hz
rotation mass	work temp	storage temp	protection level	weight
4x10 ⁻³ kgm ²	-30~85°C	-35~95°C	IP51	100g

◆ OUTPUT PHASE SHIFT

	wave ratio : a+b=0.5T±0.1T c+d=0.5T±0.1T	cycle tolerance ≤0.05T T=360°/N (N=output pulse)
	signal width : Tz=1T±0.5T	A, B no standard position of A, B, Z phase check CW waveform from encoder
	signal precision : A, B ≤0.2T	

◆ CONNECTION TABLE

signal	A	B	Z	Ā	B̄	Z̄	Vcc	GND
color	green	white	yellow	brown	grey	orange	red	black