

# PicoLog<sup>®</sup> CM3

CURRENT DATA LOGGER

## HIGH ACCURACY WITH 24-BIT RESOLUTION

Wide current range covering 0 to 200 A

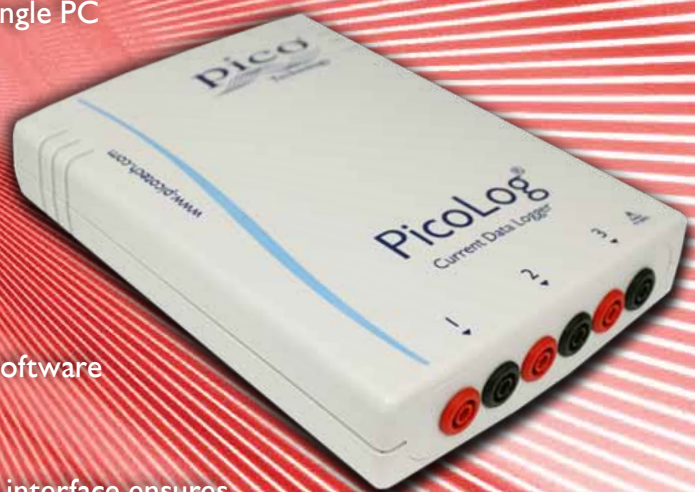
Multiple units can be run on a single PC

Supplied clamps enable recording of 3 signals

Option of power over Ethernet or USB

Supplied with PicoLog data logging software

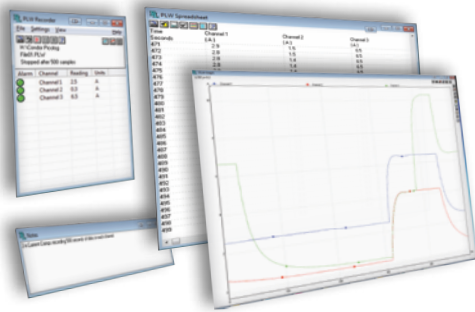
Dual USB/Ethernet interface ensures  
problem-free installation



# PicoLog CM3 CURRENT MONITORING DATA LOGGER

The new PicoLog CM3 USB/Ethernet Current Data Logger is a compact, easy-to-use instrument for measuring the current consumption of buildings and machinery. With three channels, high accuracy and low noise, it is ideal for recording data from both single-phase and three-phase AC supplies. The logger is supplied complete with three AC current clamps and all necessary software. The USB and Ethernet interfaces allow the logger to be used as a USB-only device, as a USB-powered device with Ethernet interface, or as a Power-over-Ethernet (PoE) device. Using the Ethernet interface, the PicoLog CM3 can be located anywhere on a LAN or on the internet.

## PicoLog



In addition to the monitor view, PicoLog can also display a graph, a spreadsheet and user notes. It can display them all at once, as shown here, or individually in any combination.

## DATA COLLECTION

PicoLog is a powerful but flexible data acquisition program designed for collecting, analyzing and displaying data over long or short periods of time. Data can be viewed both during and after data collection in spreadsheet or graphical format. If required, the data can also be easily exported to other applications.

## SOFTWARE DRIVERS

For users who wish to write their own software or use our products with third-party software we provide, free of charge, a range of software drivers and examples. Drivers are included for Windows XP, Vista and Windows 7 (32 and 64 bit). Programming examples are supplied for C/C++, LabVIEW, and Excel.

## SPECIFICATIONS

### Current Clamps



Not being powered by batteries these unpowered current clamps are ideally suited to applications where current consumption is being monitored over long periods of time.

Range (1 mV/A)	0.1 to 200 A AC RMS
Accuracy	±2 %, ±0.5 A
Output voltage	1 mV/A
Maximum output impedance	1 kΩ
Maximum conductor size	16 mm
Output connectors	4 mm banana plugs
Operating environment	0 °C to 50 °C
Storage environment	-30 °C to 60 °C
Size in mm (W x L x D)	111 x 50 x 33 mm
Weight	129 g
Standards	IEC1010-1 (1995); EN61010-1 (2001) Category II 600 V Category III 300 V

### PicoLog CM3

The table below gives technical details for the PicoLog CM3 data logger.

Number of channels	3
Range (voltage input)	0 to 1 V AC RMS
Accuracy (voltage input)	±1 % (to 200 mV) ±2.5 % (to 1 V)
Overload protection	±30 V DC
Voltage input	1V RMS 20 Hz to 1 kHz
Resolution	24 bit ADC
Reading rate	<1 second per conversion
Input connectors	4 mm socket
PC connection	USB or Ethernet
Dimensions	184 x 135 x 36 mm

## ORDER CODE and PRICE

ORDER CODE	DESCRIPTION	£	\$*	€*
PP803	PicoLog CM3 (Incl. 3 Current Clamps)	349	579	424
PP815	PicoLog CM3	249	410	300
TA138	Current Clamp	40	65	48

\*US dollar and euro prices are subject to exchange rate variations.

For latest prices see our website or contact us at the address below.