

CERAMIC RHEOSTATS (Potentiometers)

Our heavy potentiometers and rheostats are made in the following powers : 15-30-40-60-80-125-250-500 and 1000 Watts.

These nominal powers are applicable in good conditions of ventilation. If the installation becomes in closets or closed boxes, where ventilation is insufficient these powers are due to reduce until about 20%.

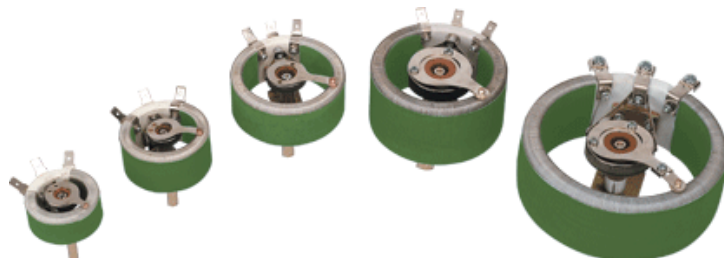
The ceramic core is made of hard non hygroscopic steatite, thus avoiding corrosion due to electrolysis. The core is wound with high quality copper-nickel or chrome-aluminium wire, according to the required ohmic value and power of the winding.

Each turn of the winding is hold firmly in place and protected against mechanical damages, by a hard, heat-resistant ceramic cement.

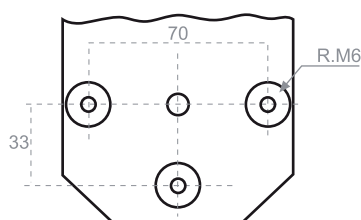
This cement coating which resists 900°C has a fast heat dissipation due to its good heat conductivity and matt radiating surface.

The slider is a fine-silver brush, according to the requirements.

Besides linear windings, to order we can wind multi/sections windings, according to customer's needs or specifications, in order to provide a non-linear response.



POTENCIA POWER	A	B	C	D	d	R	G	L	PESO (KG.) WEIGHT (KG.)	GAMA DE VALORES OHMIC VALUES
PC12	25	8	10	32	6	M-10	290°	25	0,028	5Ω – 10kΩ
PC25	35	8	38	45	6	M-10	280°	30	0,125	5Ω – 20kΩ
PC35	40	12	32	55	6	M-10	278°	35	0,140	5Ω – 25kΩ
PC50	40	12	37	65	6	M-10	310°	41	0,150	5Ω – 25kΩ
PC75	43	12	37	73	6	M-10	317°	45	0,200	5Ω – 25kΩ
PC125	60	12	18	87	6	M-10	302°	53	0,360	5Ω – 15kΩ
PC250	60	12	18	117	6	M-10	314°	70	0,535	5Ω – 15kΩ
PC500	86	12	36	144	8	M-12	310°	85	1,225	5Ω – 10kΩ
PC1000	103	10	54	205	8	(1)	320°	115	2,700	3Ω – 10kΩ



(1)
ANCHORAGE PC-1000

