

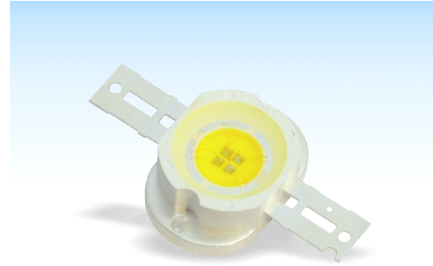
Hight Power Emitter LED

P/N: PWD3AH1 (White)

Rev: 03



ATTENTION
OBSERVE PRECAUTIONS
FOR HANDLING
ELECTROSTATIC
DISCHARGE
SENSITIVE
DEVICES



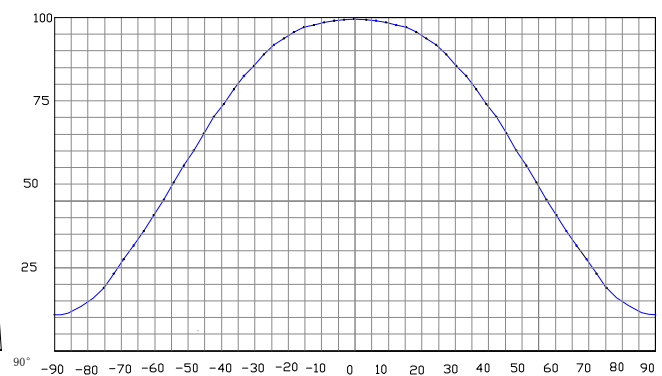
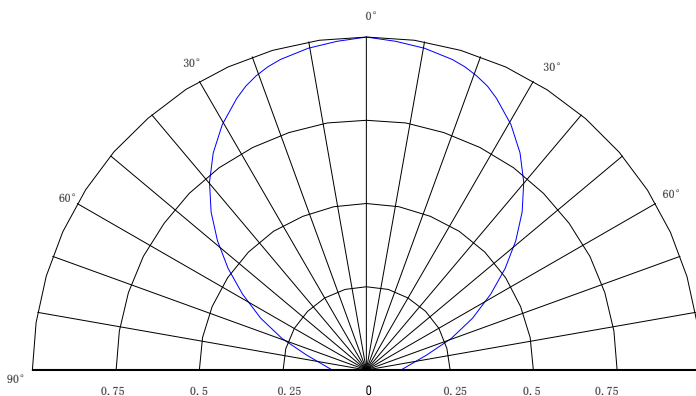
Features

- Long operating life
- Highest flux
- Wide range of colors:2500K-25000K
- More energy efficient than incandescent and most halogen lamps
- Low voltage DC operated
- Cool beam, safe to the touch
- Instant light (less than 100ns)
- Fully dimmable
- No UV
- Superior ESD protection
- Eutectic die bonding
- RoHS compliant

Applications

- Reading lights (car, bus, aircraft)
- LCD Backlights/light Guides
- Fiber optic alternative/ Decorative / Entertainment
- Mini-accent/Up lighters/Down lighters/ Orientation
- Indoor/Outdoor commercial and Residential Architectural
- Cove/Under shelf/Task
- Bollards/Security/Garden
- Portable (flashlight, bicycle)
- Edge-lit signs (Exit, point of sale)
- Automotive Exit (Stop-Tail-Turn,CHMSL, Mirror Side Repeat)
- Traffic signaling / Beacons / RailCrossing and Wayside

■ Radiation Pattern



High Power Emitter LED

P/N: PWD3AH1 (White)

Rev: 03

■ Typical Optical/ Electrical Characteristics @T_J=25°C

Item	Symbol	Condition	Min.	Typ.	Max.	Unit
Forward Voltage	V _F	IF=1.4A	--	10	--	V
Reverse Current	I _R	VR=5v	--	--	50	uA
50% Power Angle	2θ1/2	IF=1.4A	--	140	--	deg
Luminous Intensity	Φ _V	IF=1.4A	300	350	450	lm
Recommend Forward Current	I _F	--	--	1.4	--	A
Chromaticity	T _C	IF=1.4A	5000	6000	7000	k
Chromaticity Coordinates	X	IF=1.4A	--	--	--	--
	Y	IF=1.4A	--	--	--	

Notes: 1. Tolerance of measurement of forward voltage ±0.1V.

2. Tolerance of measurement of peak Wavelength ±2.0nm.

3. Tolerance of measurement of luminous intensity ±15%.

■ Absolute Maximum Rating

Item	Symbol	Absolute Maximum Rating	Unit
Forward Current	I _F	1.4	A
Peak Forward Current*	I _{FP}	1.5	A
Reverse Voltage	V _R	5	V
Power Dissipation	P _D	10	W
Electrostatic discharge	E _{SD}	±4500	V
Operation Temperature	T _{OPR}	-40~+80	°C
Storage Temperature	T _{STG}	-40~+100	°C
Lead Soldering Temperature*	T _{SOL}	Max. 260°C for 6sec Max.	

*IFP Conditions: Pulse Width ≤ 10msec duty ≤ 1/10

* All high power emitter LED products mounted on aluminum metal-core printed circuit board, can be lighted directly, but we do not recommend lighting the high power products for more than 5 seconds without a appropriate heat dissipation equipment.

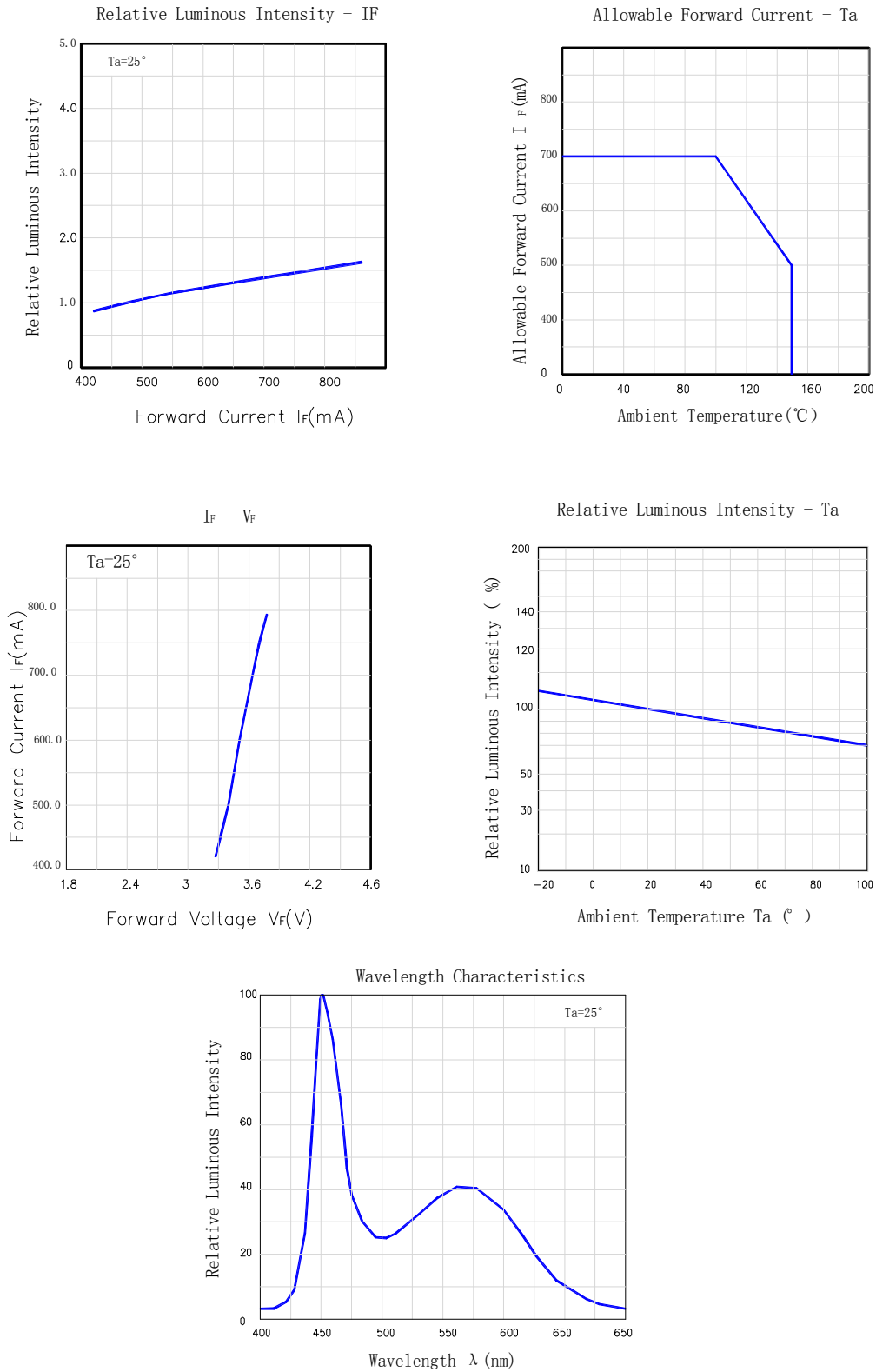
Hight Power Emitter LED

P/N: PWD3AH1 (White)

Rev: 03

■ Typical Optical/Electrical Characteristics Curves

($T_J=25^{\circ}\text{C}$ Unless Otherwise Noted)

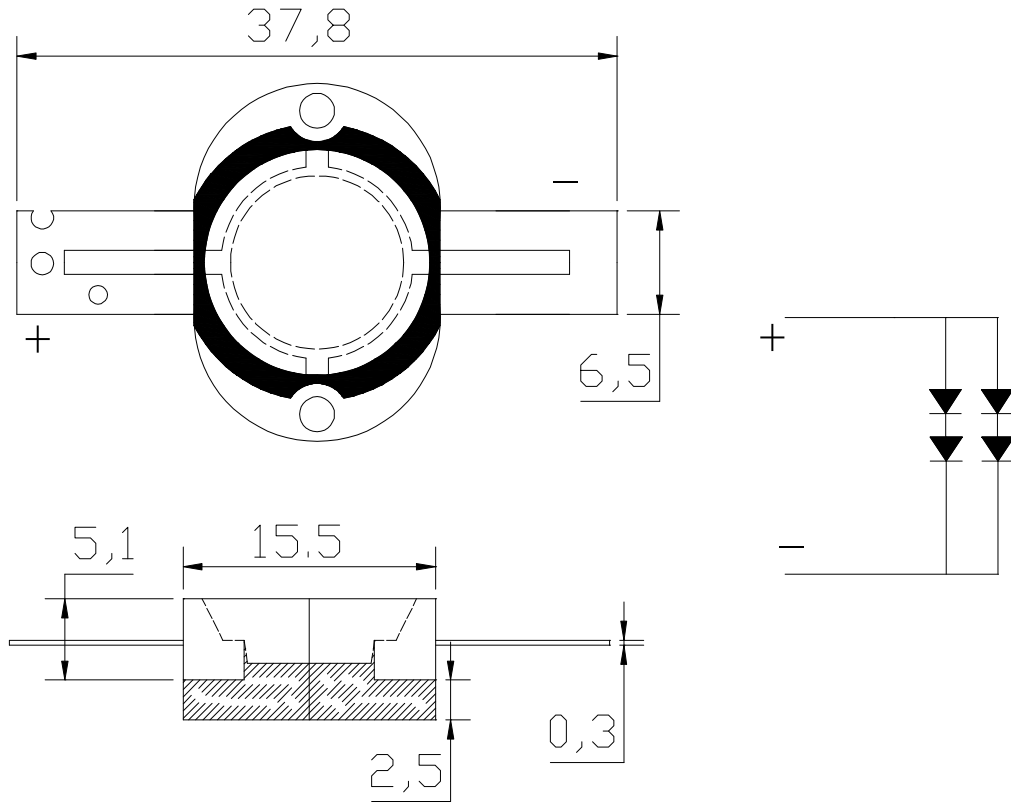


Hight Power Emitter LED

P/N: PWD3AH1 (White)

Rev: 03

Package Dimensions



Notes:

1. All dimension units are millimeters.
2. All dimension tolerance is $\pm 0.2\text{mm}$ unless otherwise noted.