



POTENTIOMETERS

Our heavy potentiometers and rheostats are made in several powers i.e.: for 15-30-40-60-80-125-250-500 Watts of heat dissipation.

The ceramic core is made of hard non-hygroscopic steatite, thus avoiding corrosion due to electrolysis. The core is wound with high quality copper-nickel or chrome-aluminium wire, according to the required ohmic value of the winding.

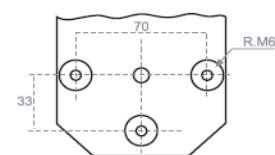
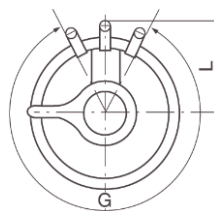
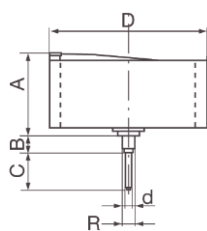
Each turn of winding is hold firmly in place and protected against mechanical damages, by a hard, heat-resistant ceramic cement.

This cement coating which resists 900 degrees Celsius has a fast heat dissipation due to its good heat conductivity and matt radiating surface.

The slider is a fine-silver brush, according to the requirements.

Besides linear windings, to order we can wind multi/sections windings, according to customer's needs or specifications, in order to provide a non-linear response.

TYPE	A	B	C	D	d	R	G	L	WEIGHT (Kg)	OHMIC VALUES
PC 12	25	8	10	32	6	M-10	290°	24	0,028	5Ω - 10kΩ
PC 25	35	8	38	45	6	M-10	280°	30	0,090	5Ω - 20kΩ
PC 35	40	12	32	55	6	M-10	278°	35	0,140	5Ω - 25kΩ
PC 50	40	12	37	65	6	M-10	310°	41	0,150	5Ω - 25kΩ
PC 75	43	12	37	73	6	M-10	317°	45	0,200	5Ω - 25kΩ
PC 125	60	12	18	87	6	M-10	302°	53	0,360	5Ω - 15kΩ
PC 250	60	12	18	117	6	M-10	314°	70	0,535	5Ω - 15kΩ
PC 500	86	12	36	144	8	M-12	310°	85	1,225	5Ω - 10kΩ
PC 1000	103	10	54	205	8	(1)	320°	115	2,700	3Ω - 10kΩ



(1)
Anclaje Mod. PC-1000