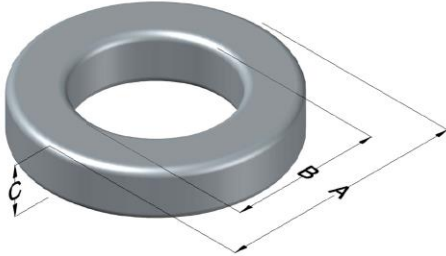




0077315A7

110 Delta Drive
Pittsburgh, PA 15238
NAFTA Sales: (1)800-245-3984
HK Sales : (852)3102-9337
magnetics@spang.com
www.mag-inc.com



Kool M μ Permeability (μ)	A _L (nH/T ²)	Core Marking			Coating Color
		Lot Number	Part Number	Inductance Grade	
75	54 \pm 8%	XXXXXX	77315A7	N/A	Black

Dimensions	Uncoated		Coated Limits			Packaging
	(mm)	(in)	(mm)	(in)		
OD (A)	22.9	0.900	23.7	0.930	max	Bulk Pack 4 bags/box Box Qty= 1000 pcs
ID (B)	14.0	0.550	13.3	0.525	min	
HT (C)	7.62	0.300	8.39	0.330	max	

Electrical Characteristics			Physical Characteristics						
Watt Loss @ 100 kHz, 100mT max(mW/cm ³)	DC Bias min (oersteds)		Voltage Breakdown wire to wire min (V _{AC})	Break Strength min (kg)	Window Area W _A (mm ²)	Cross Section A _e (mm ²)	Path Length L _e (mm)	Volume V _e (mm ³)	Weight (g)
	900	80%							
	25.5	64.0							

Winding Information					Temperature Rating		
Winding Length Per Turn				Wound Coil Dimensions (mm)		Curie Temp: 500°C	
Winding Factor	(mm)	Winding Factor	(mm)	40% Winding Factor	OD	25.7	
					HT	12.4	
				Completely Full Window	Max OD	32.6	
					Max HT	19.8	
0%	27.0	40%	33.9	Surface Area (mm ²)			
20%	30.5	45%	34.9				
25%	31.3	50%	35.9	Unwound Core			
30%	32.0	60%	38.0				
35%	33.1	70%	40.4	40% Winding Factor			2,400
Coating Temp (Continuous up to): 200°C							Notes:

