

Module: DSN-VC288

Specification:

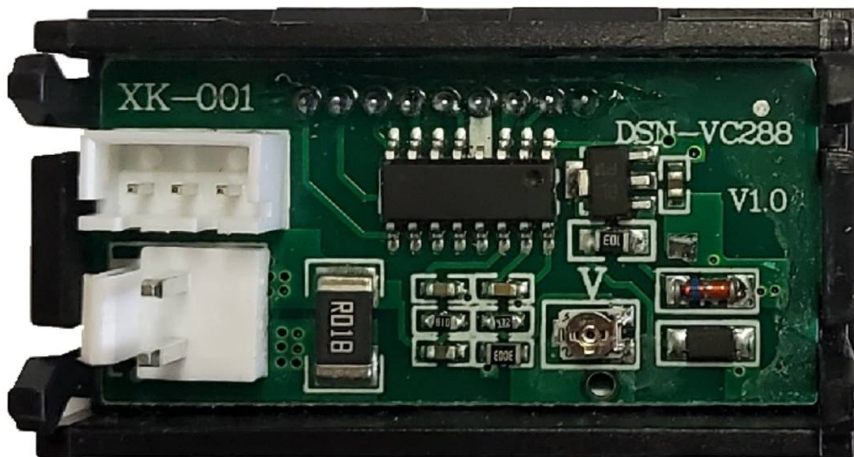
Voltage measurement range:	0.0V-100V Max.
Current test range:	0-999mA or 0-10A, (2 range optional)
Power supply range:	4.5V ~ 24V
Working current:	< 20mA
Voltage error:	±0.1%
Current error:	±1%
Internal shunt specifications:	Shunt build in
Refresh rate:	300mS
Display method:	2 by 3, 0.28 "7-Seg LED
Display colour:	Red = V, Blue = A
Lead length:	15cm
Dimensions:	L=48 x H=29 x T=22 mm
Mounting holes:	46 x 27 mm
Operating temperature:	-10°C~65°C

Precautions:

1. The 2 Pin terminal is not used

Pins:

2. This section of the head power supply range is 4 ~ 24V (out of range will burn), the measurement range is 0 ~ 100V max, such as the need for direct measurement of electric vehicles or solar systems voltage and current, please use the following paragraph.



Volt find adjustment

