

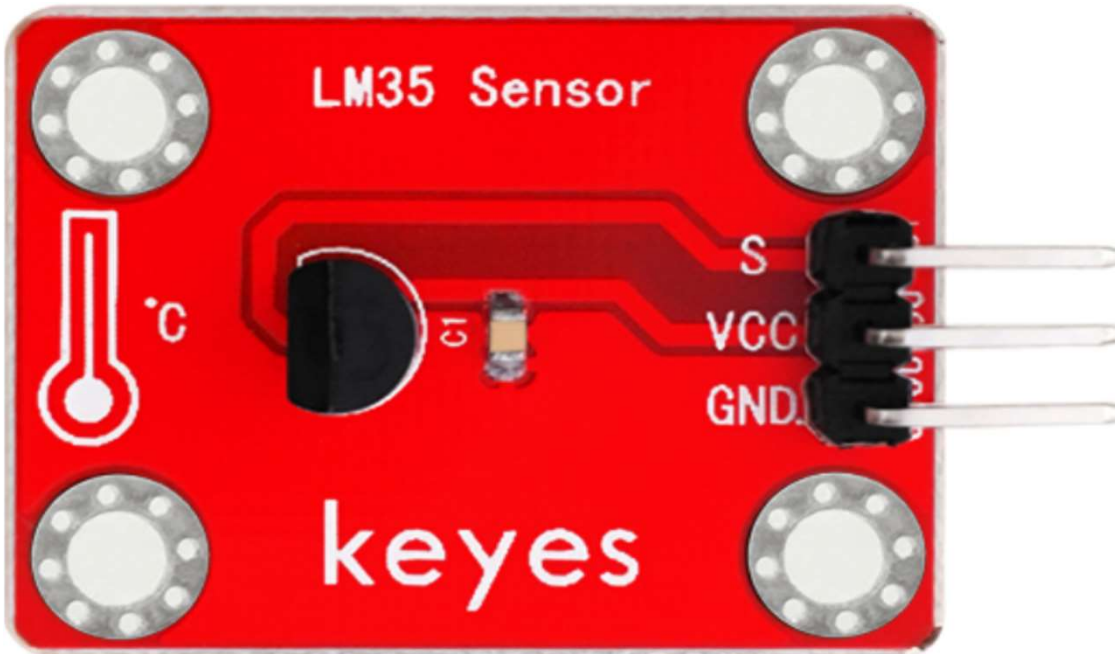
## KE0039 KEYES LM35 temperature sensor module

### Parameters:

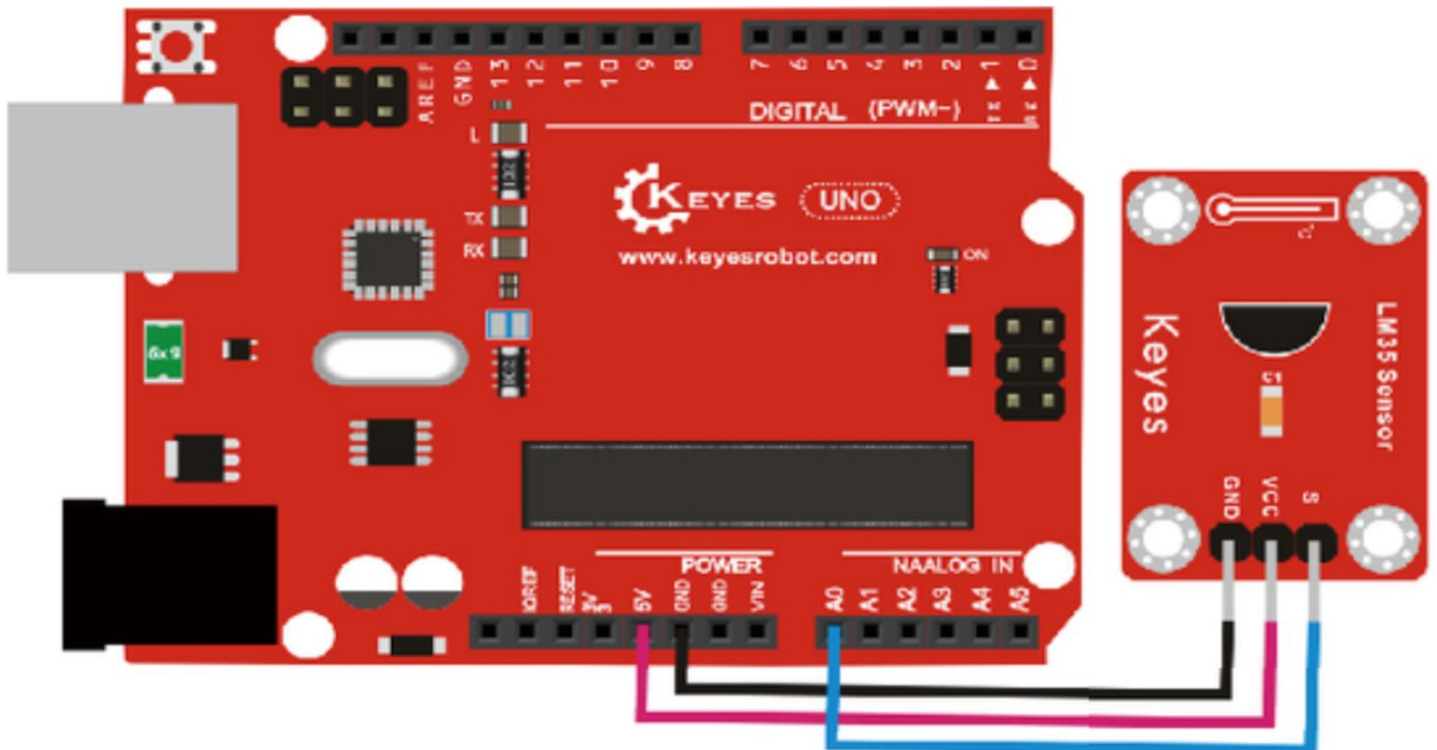
Working Voltage: 5VDC

Colour: Red

Size: 35x22x10mm.



### PINOUT Instruction:



Shenzhen Keyi Interactive Robot Co., Ltd.

**Sample Code:**

```
void setup()
{
  Serial.begin(9600);//Set Baud Rate to 9600 bps
}
void loop()
{
  unsigned int val;
  unsigned int dat;
  val=analogRead(0);//Connect LM35 on Analog 0
  dat=(500 * val) /1024;;
  Serial.print("Temp:"); //Display the temperature on Serial monitor
  Serial.print(dat);
  Serial.println("C");
  delay(500);
}
```

**Result:**

Wire it up as the above diagram and upload well the code to the board, then open the serial monitor and set the baud rate as 9600, finally you will see the current temperature value shown below. The value may be slight difference due to different place and weather.

