



Pushbutton Switches

B1900A (FROM B1900 TO B1903)
CONTACT BLOCK

B1915AA (FROM B1915 TO B1920)
RATED VOLTAGE
CONTACT BLOCK

CONTACT BLOCK

A	B	C	D	E	F	G	H
1NO	1NC	1NO1NC	2NO	2NC	2NO2NC	4NO	4NC

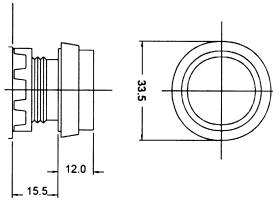
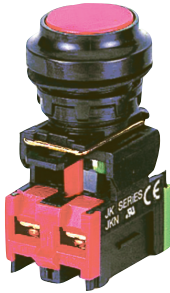
RATED VOLTAGE

Signal	A	B	D	E
Rating	110 V	220 V	440 V	12 V

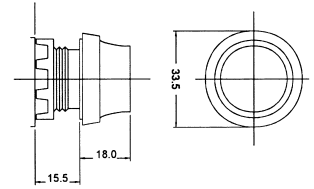
SPECIFICATIONS

Contact Resistance	≤40mΩ
Dielectric Strength	>2000VAC 60Hz
Ambient Temperature	-20°C ~ +60°C
Operating Force	750g
Mechanical Life	5,000,000 times
Electrical Life	500,000 times
Rated Insulation Voltage	250V AC
Conventional Thermal Current	6Amp
Screw Tightening Torque	0.8N.m

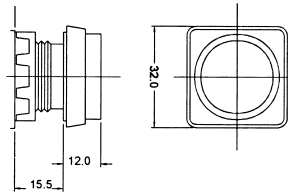
B1900
FLAT HEAD PUSHBUTTON SWITCH
COLOR OF LENS : BLACK BLUE GREEN RED YELLOW WHITE



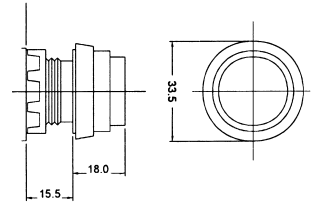
B1915
ILLUMINATION FLAT HEAD PUSHBUTTON SWITCH
COLOR OF LENS : BLUE GREEN RED YELLOW WHITE



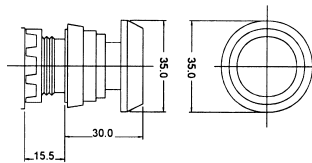
B1901
FLAT HEAD PUSHBUTTON SWITCH
COLOR OF LENS : BLACK BLUE GREEN RED YELLOW WHITE



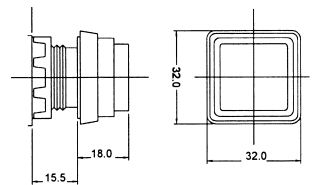
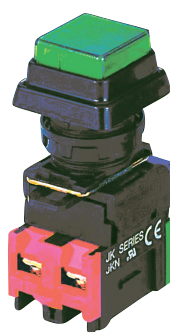
B1916
ILLUMINATION EXTENDED HEAD PUSHBUTTON SWITCH
COLOR OF LENS : BLUE GREEN RED YELLOW WHITE



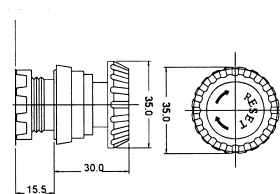
B1902
EMERGENCY MUSHROOM HEAD PUSHBUTTON SWITCH
COLOR OF PUSH-BUTTON : RED GREEN YELLOW



B1917
ILLUMINATION EXTENDED HEAD PUSHBUTTON SWITCH
COLOR OF LENS : BLUE GREEN RED YELLOW WHITE



B1903
LATCHED MUSHROOM HEAD PUSHBUTTON SWITCH
COLOR OF PUSH-BUTTON : RED



B1920
ILLUMINATION DOUBLE PUSHBUTTON SWITCH
COLOR OF CENTRAL LENS : RED YELLOW WHITE

