

CONQUER Fuse Block Are Available For 1/4 " x 1-1/4" And 5 x 20mm Fuses. The Special Phenolic Resin Base Offers Extremely High Insulative Values And Unless Otherwise Noted Include Special Dual-Purpose Connection Tabs For Either Quick-Connect, Push-On Terminal Wires Or For Soldering Use. A Wide Variety Of Sizes, Shapes And Mounting Configurations Fulfill All Fuse Application. Additionally, CONQUER Designers Are Available To Produce A Fuse Block To Meet Your Specific Applications.

# Specification Guide Codes:

**A= Item Number**

**B= Insertion & Extraction Force**

**C= Dielectric Strength For 60 Sec**

**D= Suitable Rated Current**

**E= Insulation Resistance At500VDC**

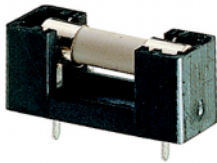
**F= Temperature Rise**

**G= Voltage Drop**

• Special Design Also Available. For Details Please Contact Factory.

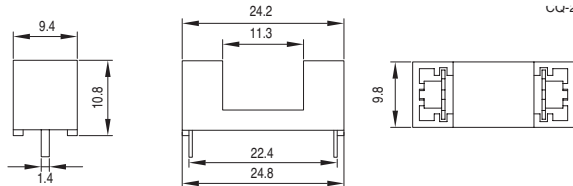
• Use UL Approved Materials • Low Cost • Low Contact Resistance • Flame Retardant.

## FUSE BLOCKS FOR 5x20mm FUSES



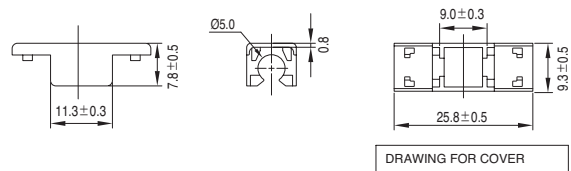
### CQ-200C

**B:** 1Kg.Min.  
**C:** AC500V Min.  
**D:** 6.3A250V  
**E:** 100MΩ Min  
**F:** 50°C Max.  
**G:** 20mV Max.



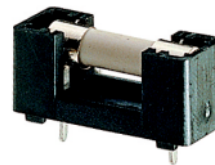
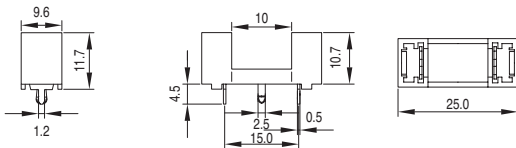
### CQ-200CT

**B:** 1Kg.Min.  
**C:** AC500V Min.  
**D:** 6.3A250V  
**E:** 100MΩ Min  
**F:** 50°C Max.  
**G:** 20mV Max.



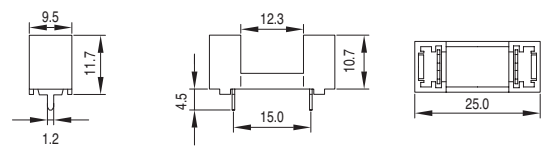
### CQ-2001(S)

**B:** 1Kg.Min.  
**C:** AC500V Min.  
**D:** 6.3A250V  
**E:** 100MΩ Min  
**F:** 50°C Max.  
**G:** 20mV Max.



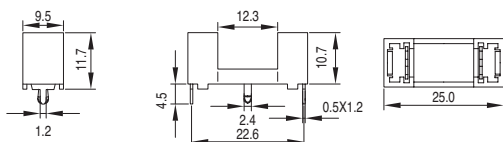
### CQ-2002

**B:** 1Kg.Min.  
**C:** AC500V Min.  
**D:** 6.3A250V  
**E:** 100MΩ Min  
**F:** 50°C Max.  
**G:** 20mV Max.



### CQ-2003

**B:** 1Kg.Min.  
**C:** AC500V Min.  
**D:** 6.3A250V  
**E:** 100MΩ Min  
**F:** 50°C Max.  
**G:** 20mV Max.



### CQ-2004

**B:** 1Kg.Min.  
**C:** AC500V Min.  
**D:** 6.3A250V  
**E:** 100MΩ Min  
**F:** 50°C Max.  
**G:** 20mV Max.

