

Ks0187 keystudio ACS712-5A Current Sensor

Contents

[Introduction](#)

[Parameters](#)

[Connection Diagram](#)

[Sample Code](#)

[Result](#)

[Resources](#)

[Buy from](#)

Introduction

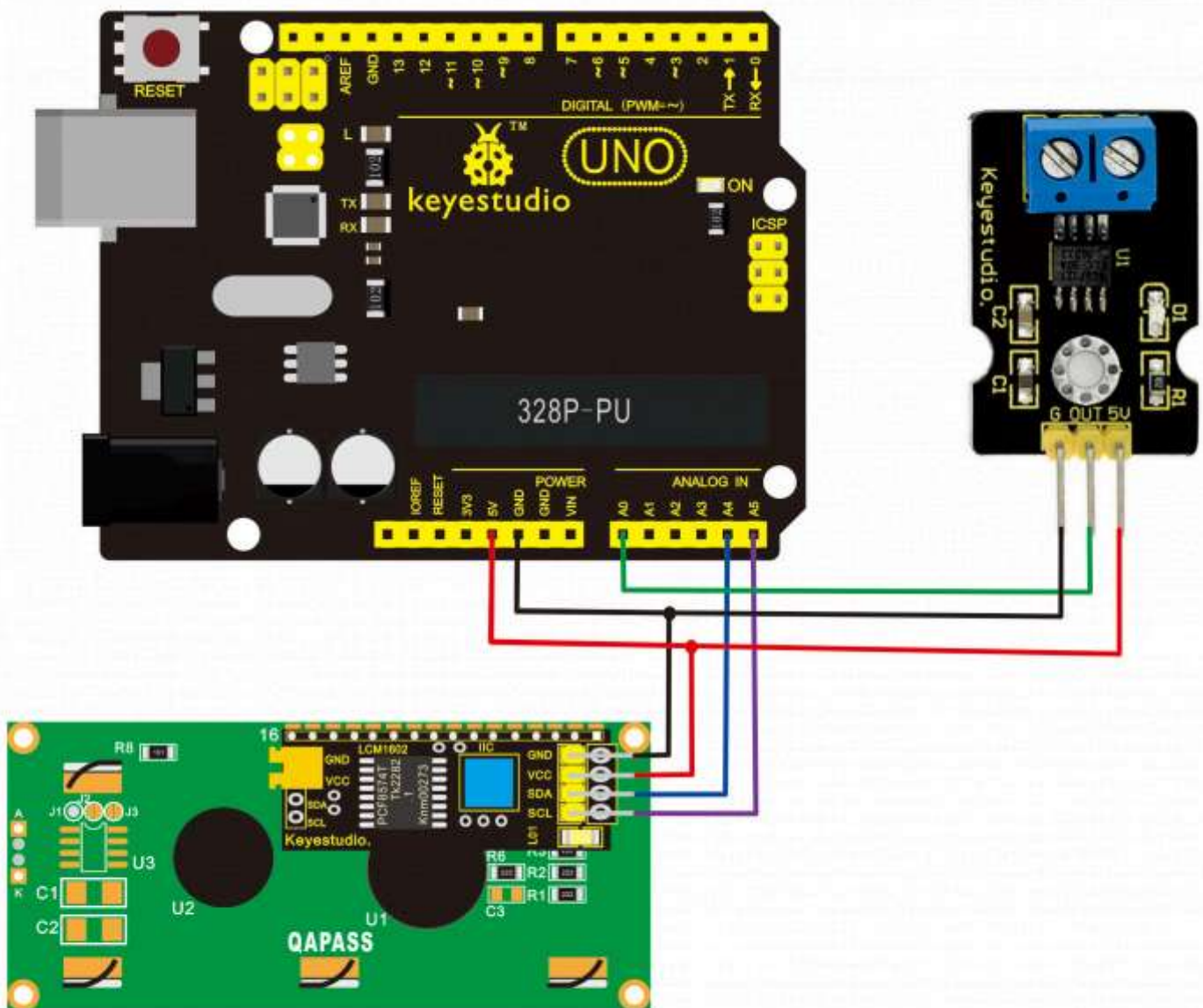
ACS712-5A Current Sensor is used to measure the intensity of current. It contains ACS712ELC-5B chip, based on Hall Effect. You should protect it from influence of magnetic field when using it.



Parameters

- Chip:ACS712ELC-5B
- 5V Power Supply and Power Indicator On-board
- This module can detect 5A positive and negative current,corresponding analog output at 185mV/A.
- Output voltage is $VCC/2$ without current flowing

Connection Diagram



Sample Code

```
#include <Wire.h> //invoking I2CLibraries coming with Arduino
#include <LiquidCrystal_I2C.h>
LiquidCrystal_I2C lcd(0x27,16,2);

int temp;

// the setup routine runs once when you press reset:
void setup() {
  // initialize serial communication at 9600 bits per second:
  lcd.init();
  delay(100);
  lcd.backlight();
  Wire.begin(); //initializing I2C
  lcd.clear(); //clear screen

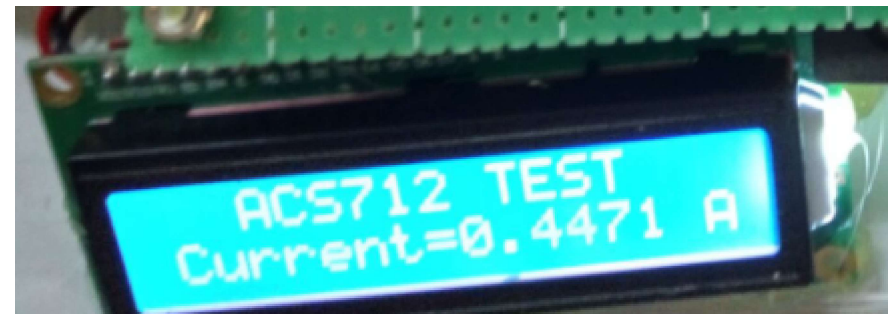
  delay(100);
  lcd.setCursor(2,0);
  lcd.print("ACS712 TEST");
  delay(200);
  Serial.begin(9600);
}
// the loop routine runs over and over again forever:
void loop() {
  // read the input on analog pin 0:
  float current = analogRead(A0);
  temp=current;
  temp=temp-512;
  current=temp/35.8;
  //lcd.clear(); //clear screen
  // print out the value you read:
  Serial.print("current=");
  Serial.print(current);
  Serial.println("A");
  lcd.setCursor(0,1);
  lcd.print("Current=");
  lcd.setCursor(8,1);
  lcd.print(current);
  lcd.setCursor(15,1);
  lcd.print("A");
  delay(300);      // delay in between reads for stability
}
```

Download Address of Wire and LiquidCrystal_I2C Libraries:

https://drive.google.com/open?id=1JUSoI9U2N3onYCxN323SlGm9Ywm_GRp2

Result

In order to display data conveniently, add I2C LCD1602 Module. Then upload program and connect wires. After plugging in power, LED on this sensor is on and I2C LCD1602 Module displays the current intensity shown as below.



Resources

- **Code and Libraries**

<https://fs.keyestudio.com/KS0187>

Buy from

- **Official Website** (<https://www.keyestudio.com/free-shipping-keyestudio-acs712-5a-current-sensor-for-arduino-compatible-p0165.html>)
- **Aliexpress store** (https://www.aliexpress.com/store/product/Free-shipping-keyestudio-ACS712-5A-Current-Sensor-for-Arduino-Compatible/1452162_32783138097.html?spm=2114.12010612.8148356.55.4e475ec9dqn8oT)

Retrieved from "http://wiki.keyestudio.com/index.php?title=Ks0187_keyestudio_ACS712-5A_Current_Sensor&oldid=30590"