

EIA Type 2 Series (Standard RS-463)

Construction

- Non polar
- Plastic case
- With safety vent

Features

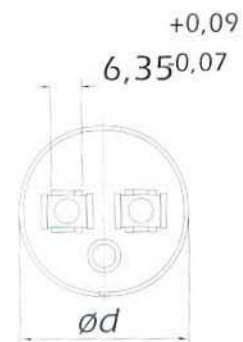
- Good electrical characteristics
- Plastic with flammability retardant (V2 class)
- Fully insulated
- Discharging resistor for $U_N \geq 220\text{Vac}$
- UL recognized: file 183224


Applications

- For single-phase AC motors, refrigeration and washing machines

Specifications and characteristics in brief

Rated Voltage U_N	110...330Vac
Rated Capacitance C_N	21...590 μF
Fraction failure	$\leq 1\%$ (during the service life)
Failure rate	≤ 100 fit ($100 \cdot 10^{-9}/\text{h}$)
Voltage endurance test	See table 1
Sectional specifications	IEC 252
Vibration resistance	See table 3



	Series	Dimensions		Packing Units (pcs)	Approx. weight (g)
		Can	$\varnothing d \times l$ (mm)		
	B42721	1	36,5 x 70	81	70
	B42722	2	36,5 x 86	72	80
	B42724	4	45 x 86	60	120
	B42725	5	45 x 111	45	140

Series, Capacitance and Voltage	
Voltage	Capacitance (μF)
	21-25 25-30 30-36 38-46 43-53 47-56 53-64 64-77 72-88 88-108 108-130 115-145 124-149 130-156 145-175 161-193 189-227 216-259 233-286 243-292 270-324 324-389 340-408 379-454 400-480 430-516 460-552 540-648 590-708 680-816 748-915 860-1032 1080-1296
110Vac	B42721 (21-25 to 115-145), B42722 (161-193 to 216-259), B42724 (30-36 to 47-56), B42725 (540-648 to 590-708)
125Vac	B42721 (21-25 to 115-145), B42722 (161-193 to 216-259), B42724 (30-36 to 47-56), B42725 (540-648 to 590-708)
165Vac	B42721 (21-25 to 115-145), B42722 (161-193 to 216-259), B42724 (30-36 to 47-56), B42725 (540-648 to 590-708)
220Vac	B42721 (21-25 to 115-145), B42722 (161-193 to 216-259), B42724 (30-36 to 47-56), B42725 (540-648 to 590-708)
250Vac	B42721 (21-25 to 115-145), B42722 (161-193 to 216-259), B42724 (30-36 to 47-56), B42725 (540-648 to 590-708)
330Vac	B42722 (161-193 to 216-259), B42724 (30-36 to 47-56), B42725 (540-648 to 590-708)

Miniaturized Series

Construction

- Non polar
- Aluminum case with insulating sleeve
- Aluminum case with safety vent

Features

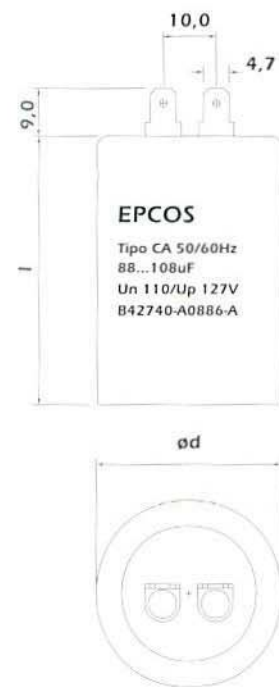
- Good electrical characteristics
- Fully insulated


Applications

- For assembly inside single-phase AC motors

Specifications and characteristics in brief

Rated Voltage U_N	110Vac
Rated Capacitance C_N	88-340uF
Fraction failure	$\leq 1\%$ (during the service life)
Failure rate	≤ 100 fit ($100 \cdot 10^{-9}/h$)
Voltage endurance test	See table 2
Sectional specifications	IEC 522
Vibration resistance	See table 3



	Series	Dimensions		Packing Units (pcs)	Approx. weight (g)
		d+0,5	l+2,0		
	B42740	25	30	200	25,2
	B42740	25	40	200	30,6
	B42740	25	50	200	36,5

Series, Capacitance and Voltage	
Voltage	Capacitance (uF)
	110Vac
	B42740

Rated test voltage ac (rms)	Capacitance rating (uF)		Duty cycle (%)		Duration of test* (n° of starts)
	From	To	On	Off	
110	21-25	124-149	1/4	29-1/4	50.000
	130-156	243-292	1	59	50.000
	270-324	378-454	1	89	33.500
	400-480	540-648	1	119	25.000
	590-708	850-1020	1	179	16.500
	1000-1200	1326-1590	1	239	12.500
125	21-25	88-106	1/4	29-1/4	50.000
	108-130	145-174	1	59	50.000
	161-193	233-280	1	89	33.500
	243-292	378-454	1	119	25.000
	400-480	590-708	1	179	16.500
	645-774	1326-1890	1	239	12.500
165	21-25	88-106	1	59	33.500
	108-130	124-149	1	89	33.500
	130-156	216-259	1	119	25.000
	233-280	340-408	1	179	16.500
	378-454	850-1020	1	239	12.500
	21-25	43-52	1	59	33.500
220	37-56	72-86	1	89	33.500
	88-106	145-174	1	119	25.000
	161-193	243-292	1	179	16.500
	270-324	460-552	1	239	12.500
	21-25	30-36	1	59	33.500
	36-43	64-77	1	89	33.500
250	72-86	88-106	1	119	25.000
	108-130	189-227	1	179	16.500
	216-259	430-516	1	239	12.500
	21-25	21-25	1	59	33.500
	25-30	30-36	1	89	33.500
	36-43	64-77	1	119	25.000
330	72-86	88-106	1	179	25.000
	108-130	270-324	1	239	12.500

* The number of starts shown are reduced starts for accelerated testing so that test time does not exceed 35 days. Type 2 capacitors should be capable of 50,000 starts for ratings to 125 volts and 40,000 starts for higher voltages.

Life Test - Miniaturized Series
Voltage: 121 Vac
Duty cycle: 1s On / 89s Off
N° cycles: 10 000
Room temperature: ($\leq 40^\circ\text{C}$)
Evaluation after test:
$\Delta C/C(\%) \leq 15$
$\tan \delta \leq 0,20$

Vibration Resistance
In accordance with IEC 68-2-6, test Fc:
displacement amplitude 0,75mm
frequency range 10...55Hz
acceleration max. 5g
duration 3 x 2h