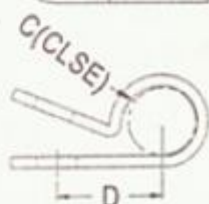
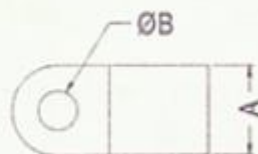
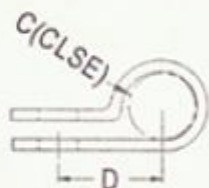
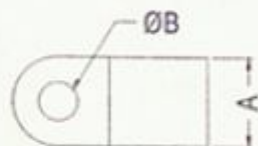
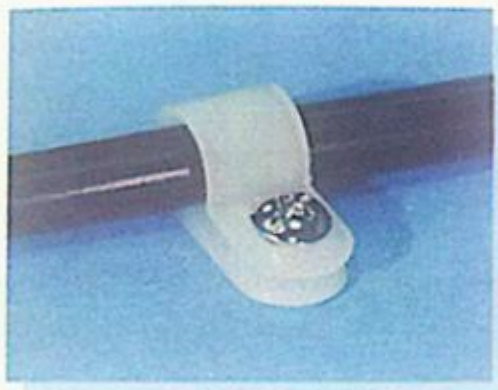


電線固定扣 CABLE CLAMP

- ◆ MATERIAL: NYLON 66 (UL)
- ◆ FLAME CLASS :94V-2
- ◆ COLOR: NATURAL/BLACK
- ◆ UNIT: mm

● 用途: 配合螺絲, 固定電線, 整齊美觀。



ONLY FOR
CC-10

PART NO	A	B	C		D	PACKAGE	
			mm	Inch			
CC-1SS	6.5	3.8	3.0	1/8	6.8	1000	
CC-1S	9.2	5.4	3.0	1/8	8.2		
CC-1	13.2	5.4	3.0	1/8	8.9		
CC-2	9.7	5.4	4.5	3/16	10.2		
CC-3	9.3	5.0	6.2	1/4	10.2		
CC-4	9.5	4.8	7.6	5/16	10.5		
CC-5	9.5	4.8	9.0	3/8	12.4		
CC-5L	12.3	5.4	9.0	3/8	13.2		500
CC-6	12.7	4.8	11.5	1/2	14.7		
CC-7	12.9	5.4	12.8	9/16	16.0		
CC-7S	12.9	4.8	15.5	5/8	16.7	200	
CC-8	12.9	5.4	17.0	3/4	20.2	100	
CC-9	12.9	5.4	20.0	7/8	21.2		
CC-10	12.9	5.4	24~27	1-1/8	23.5	1000	
CC-12	9.9	4.4	3.0	1/8	8.5		
CC-13	9.5	3.2	8.3	5/16	12.0		
CC-14	6.3	3.7	3.5	1/7	6.4		
CC-15	9.6	4.4	5.6	1/4	12.1		
CC-16	11.6	6.4	5.6	1/4	12.1		
CC-17	10.0	4.2	5.0	1/4	9.5		
CC-18	10.0	4.2	11.0	7/16	13.0		
CC-19	9.9	4.4	4.5	3/16	7.75		
CC-20	10.0	4.3	6.5	1/4	9.9		
CC-24	9.6	4.4	5.6	1/4	7.5		