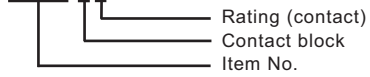


**B1850 x x (from B1850 to B1855)**


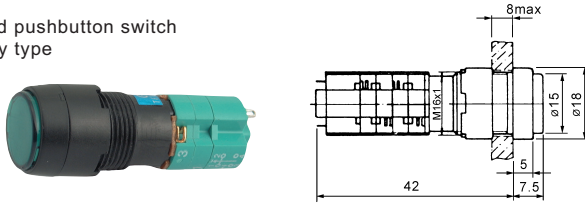
2.	Signal	A	B	C	D
	Contact block	1NO1NC	2NO2NC	3NO3NC	4NO4NC
3.	Signal	A	B	C	D
	Rating (contact)	125V4A	250V4A	24V1A	12V1A
	Lamp	neon 125V1.4mA	neon 250V1.3mA	incandescent 24V36mA	incandescent 12V38mA

Lens color : red, blue, green, white, orange

**Specifications**

Contact resistance	15mΩ Max.
Insulation resistance	100MΩ Min. (at 500VDC )
Dielectric strength	1,500VAC, 50/60 Hz for 1 minute
Ambient temperature	operating: -20°C ~ +80°C
Humidity	95% RH Max.
Operation force	150g
Service life	mechanically : 1,000,000 times. electrically : 100,000 times.
Weight	10g (1NO1NC) 15g (4NO4NC)

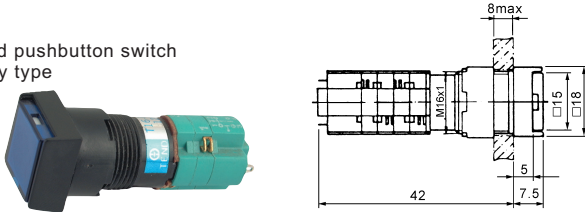
**B1850**  
Illuminated pushbutton switch  
Alternate type

**B1851**  
Illuminated pushbutton switch  
Momentary type

**B1858A /B /C /D**  
Indicator light

Signal	A	B	C	D
Rating	125V	250V	24V	12V

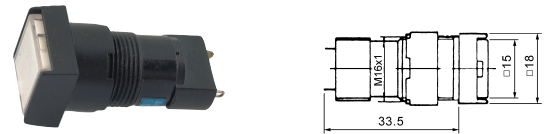
Lens color: red blue green orange

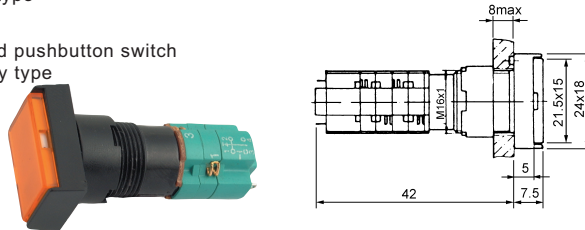

**B1852**  
Illuminated pushbutton switch  
Alternate type

**B1853**  
Illuminated pushbutton switch  
Momentary type

**B1859A /B /C /D**  
Indicator light

Signal	A	B	C	D
Rating	125V	250V	24V	12V

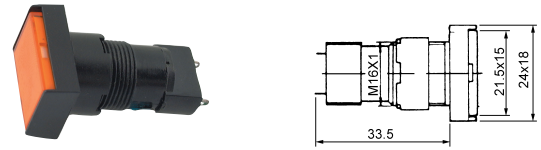
Lens color: red blue green orange


**B1854**  
Illuminated pushbutton switch  
Alternate type

**B1855**  
Illuminated pushbutton switch  
Momentary type

**B1860A /B /C /D**  
Indicator light

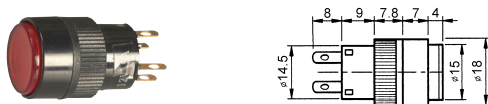
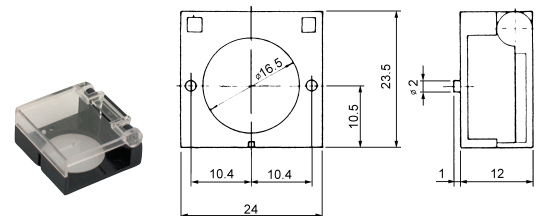
Signal	A	B	C	D
Rating	125V	250V	24V	12V

Lens color: red blue green orange


**B1856B /C /D**  
Illuminated pushbutton switch  
Alternate type

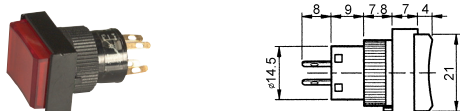
Signal	B	C	D
Rating	250V3A	24V3A	12V5A

Lens color: red blue green orange white

**B18561B /C /D**  
Illuminated pushbutton switch  
Momentary type

**B1890**  
Switch guard

**B1857B /C /D**  
Illuminated pushbutton switch  
Alternate type

Signal	B	C	D
Rating	250V3A	24V3A	12V5A

Lens color: red blue green orange white

**B18571B /C /D**  
Illuminated pushbutton switch  
Momentary type

**B1891**  
Sealing cap
