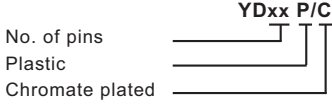


Hood 09, 15, 25, 37, 50 pins



YDxx P/C

YDBxx P/C

YDCxx P/C
(09, 25 pins)



D

Hood 09, 15, 25, 37, 50 pins (thumb screw)



YDLxx P/C

YDLBxx P/C

Metal hood
09, 15, 25, 37, 50 pins
YDxx D



D

D

Hood screws
YDS xxx

018

019



026

021

023



038

039



031



D

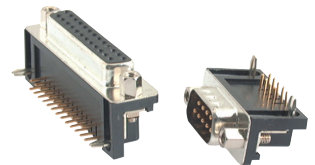
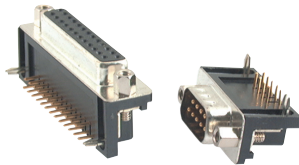
Right angle type 09, 15, 25, 37 pins



Screw lock type

Rivet lock type

Rivet & screw lock type



Plug : YFRxxP
Socket : YFRxxS
L= 8.10mm No. of pins

Plug : YFTxxP
Socket : YFTxxS
L= 8.10mm No. of pins

Plug : YFVxxP
Socket : YFVxxS
L= 8.10mm No. of pins

Plug : YFRMxxP
Socket : YFRMxxS
L=10.30mm No. of pins

Plug : YFTMxxP
Socket : YFTMxxS
L=10.30mm No. of pins

Plug : YFVMxxP
Socket : YFVMxxS
L=10.30mm No. of pins

Plug : YFRLxxP
Socket : YFRLxxS
L=14.84mm No. of pins

Plug : YFTLxxP
Socket : YFTLxxS
L=14.84mm No. of pins

Plug : YFVLxxP
Socket : YFVLxxS
L=14.84mm No. of pins

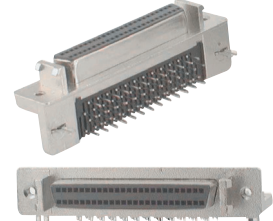
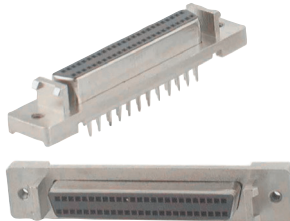
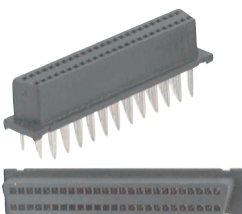
F

SCSI-II D-SUB type 50, 68 pins

Plastic type

Straight type

Right angle type



Socket : YFWxxS
No. of pins

Socket : YFWSxxS
No. of pins

Socket : YFWRxxS
No. of pins

F