

Feature

1. Insulated shaft style
2. Carbon element
3. Wide range of resistance tapers

F-168k Insulated Shaft Rotary Potentiometer

Electrical characteristics

- Total Resistance..... Single Unit: 500Ω~1 MΩ, Dual Unit: 2kΩ~ 500kΩ
- Total Resistance Tolerance..... ± 20%
- Resistance Taper..... A, B, C, D
- Rated Voltage..... Linear Taper B: AC 200V Other Tapers : AC 150V
Dual Unit: AC 50V, DC 20V
- Rated Power..... Linear Taper B: 0.125W, Other Tapers : 0.06W
Dual Unit; 0.06W
- Sliding Noise..... Less than 100mv
- Insulation Resistance..... More than 100MΩ at DC 250V
- Withstand voltage..... 1minute at AC 250V
- Residual Resistance..... Term. 1~2: Less than 20 Ω
Term. 2~3: Less than 20 Ω
- Gang Error (Dual Unit)..... -40dB~0dB ± 3dB

Mechanical characteristics

- Total Rotational Angle..... 300° ± 5°
- Rotational Torque..... 10gf.cm~100gf.cm
- Click Torque..... 50gf.cm~250gf.cm
- Rotational Stopper Strength..... 6.0kgf.cm Min.
- Push-Pull Strength..... 8.0kgf Min

Durability

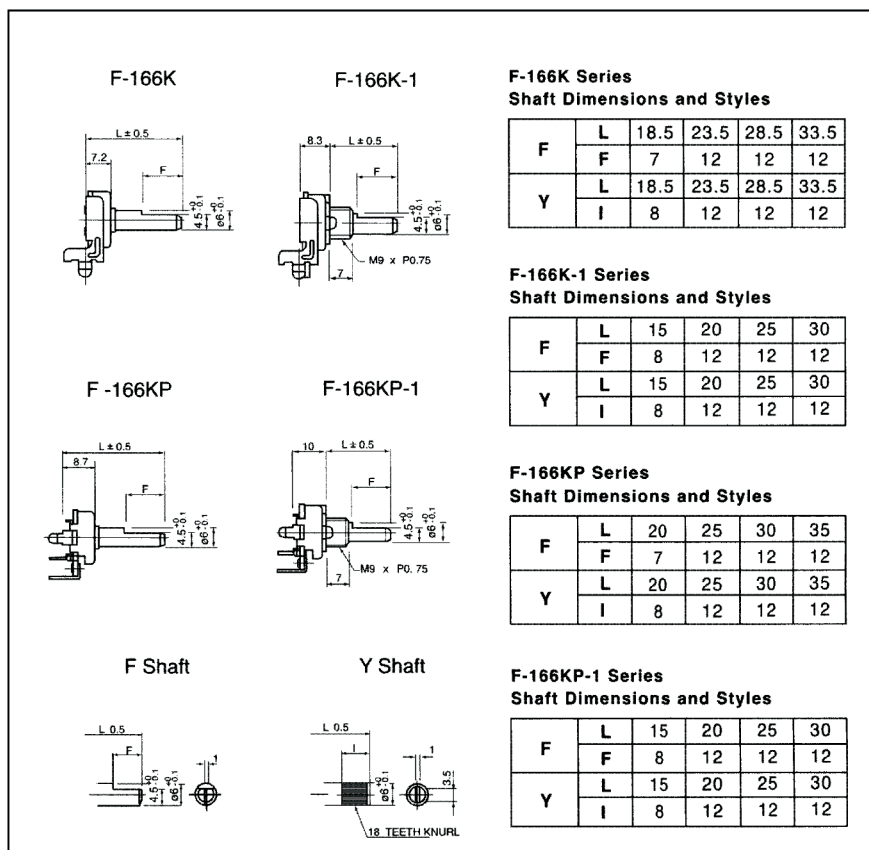
- Rotational Life..... 10,000 Cycles



Shaft illustration

Standard Dimensions of Shaft for F-166K, F-166K-1, F-166KP, F-166KP-1 Series.

(Customer designs are welcomed)





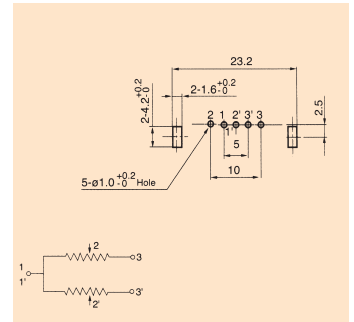
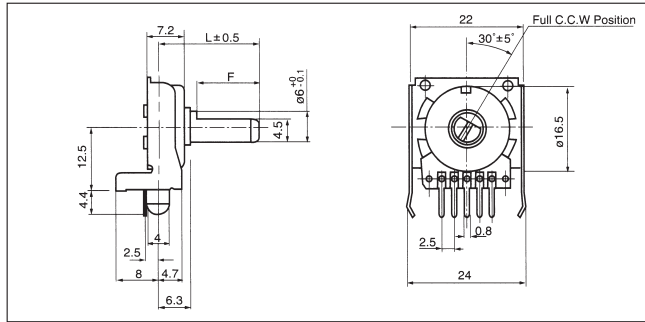
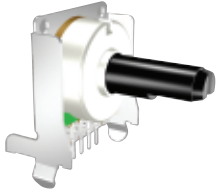
F-168K Series



Snap-In Insulated Shaft Rotary Potentiometer

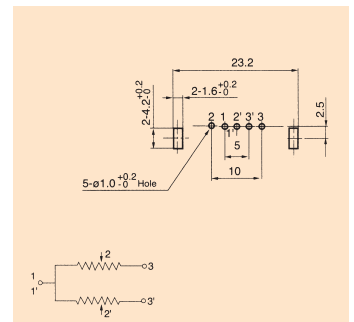
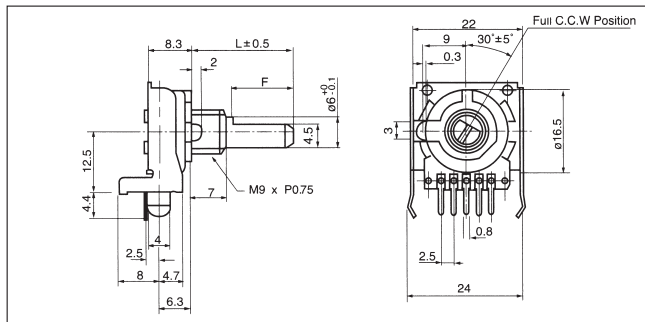
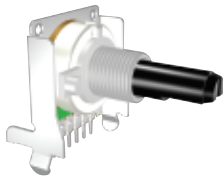
F-168K

Vertical Type, Dual Unit,
P.C.B. Terminal With Center Click



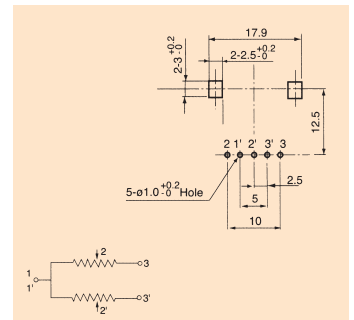
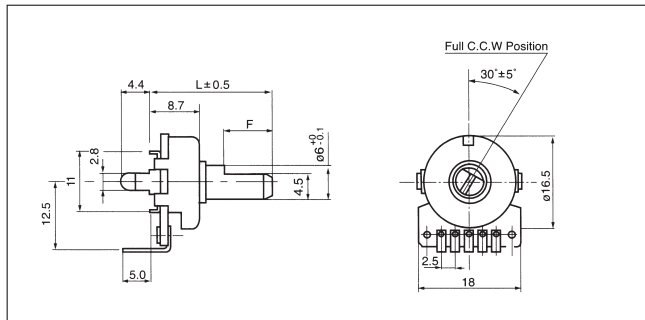
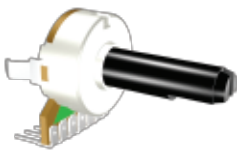
F-168K-1

Vertical Type, Dual Unit,
P.C.B. Terminal With Center Click



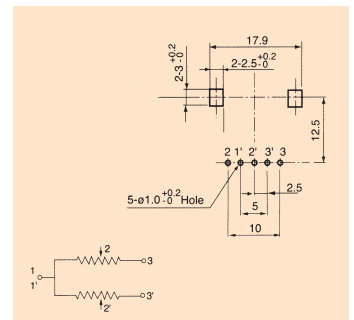
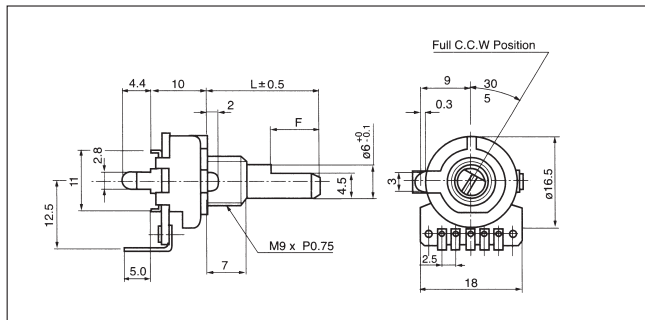
F-168KP

Horizontal Type, Dual Unit,
P.C.B. Terminal With Center Click



F-168KP-1

Horizontal Type, Dual Unit,
P.C.B. Terminal With Center Click



Part number system of insulated shaft potentiometer

