

KE0042 KEYES infrared tracing and obstacle avoidance module

Parameters:

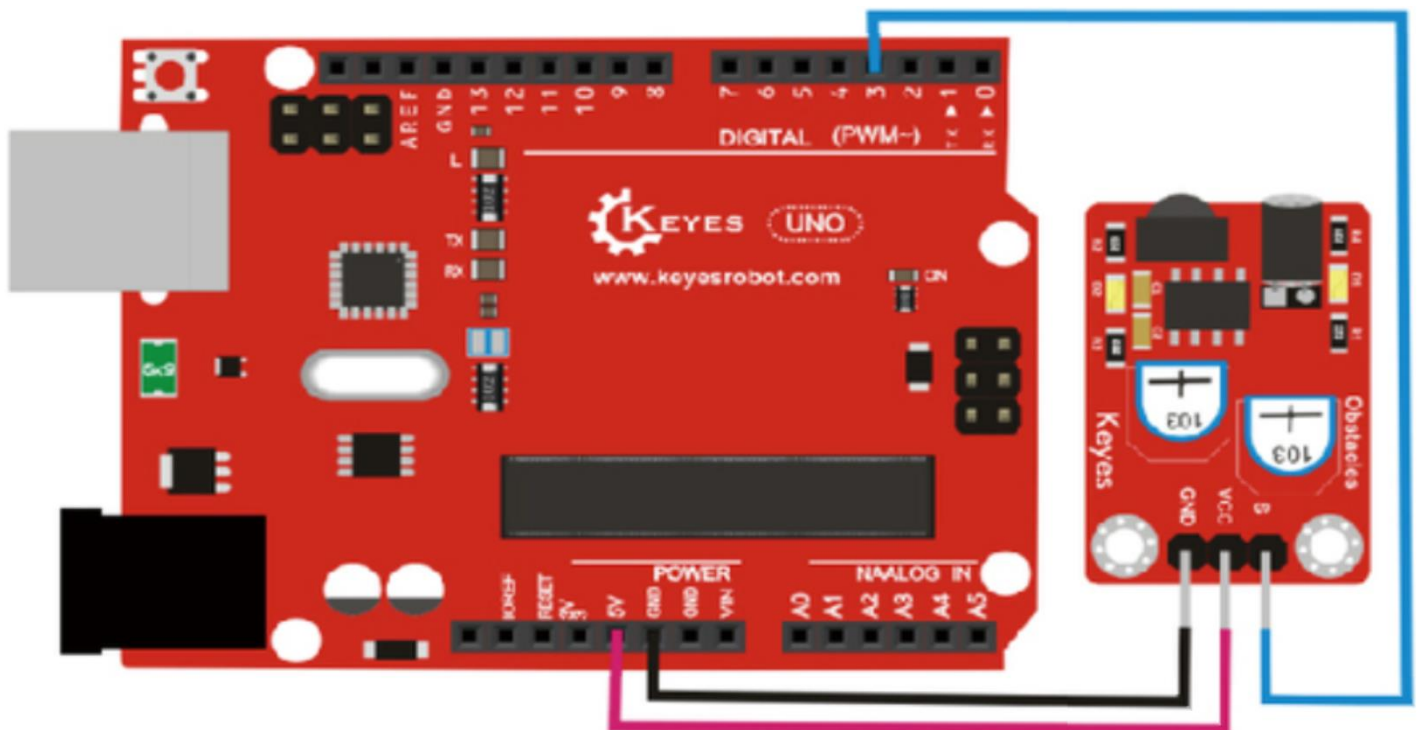
Working Voltage: 3.3 ~ 5VDC

Colour: Red

Size: 36x22x11mm.



PINOUT Instruction:



Sample Code:

```
const int sensorPin = 3; // the number of the sensor pin
const int ledPin = 13; // the number of the LED pin
int sensorState = 0; // variable for reading the sensor status
void setup() {
  pinMode(ledPin, OUTPUT);
  pinMode(sensorPin, INPUT); }
void loop(){
  // read the state of the sensor value:
  sensorState = digitalRead(sensorPin);
  // if it is, the sensorState is HIGH:
  if (sensorState == HIGH) {
    digitalWrite(ledPin, HIGH);
  }
  else {
    digitalWrite(ledPin, LOW);
  }
}
```

Result:

Done uploading the code to board, you can see the led on both UNO board and obstacle detector sensor is turned on. If you place an obstacle (cardboard box) in front of the sensor, it will detects the obstacle, Both LEDs on the sensor and LED 13 will be turned on.