



# keyestudio



## Ks0167 keyestudio HX711 Load Cell Pressure Sensor Module

### Introduction:

keyestudio HX711 module adopts hx711 24-bit high precision A/D converter chip which is specially designed for high precision electronic scale.

It has two analog input channel. Internal is integrated with 128 times programmable gain amplifier. Input circuit can be configured to bridge type (such as pressure, weighing) sensor mode.

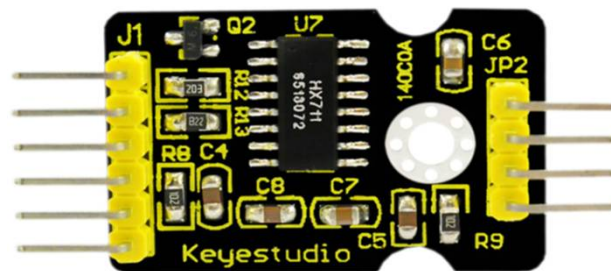
It is an ideal, high precision, low cost, front-end sampling module.

### Specification:

Supply Voltage: Max 5V

Current: >10mA

Interface: Digital



More info at KEYESTUDIO

[https://wiki.keyestudio.com/Ks0167\\_keyestudio\\_HX711\\_Load\\_Cell\\_Pressure\\_Sensor\\_Module](https://wiki.keyestudio.com/Ks0167_keyestudio_HX711_Load_Cell_Pressure_Sensor_Module)

Copyright © 2008-2020 keyestudio.com. All Rights Reserved

<http://www.keyestudio.com>



# keyestudio

