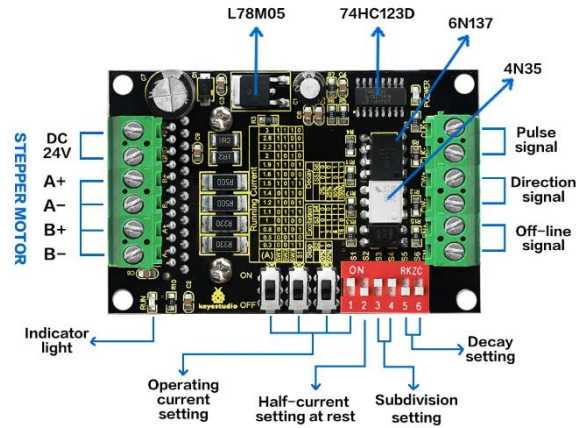
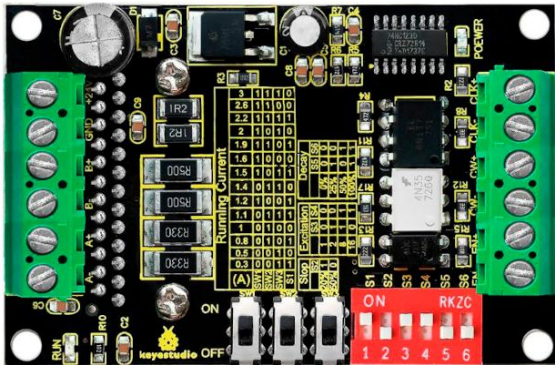


## TB6560 STEPPER MOTOR DRIVER BOARD



## Overview:

The Keyestudio board integrates the **TB6560 stepper motor driver**, an economical, high-stability, and high-reliability driver suitable for various industrial control applications. It offers strong noise immunity and multiple protection features for safe and efficient operation.

## Technical Specifications:

Parameter	Description
Driver Model	TB6560
Microstepping Modes	4 types (maximum 1/16 subdivision)
Output Current Range	0.3A – 3.0A
Current Levels	14 modes (resolution $\approx 0.2A$ )
Operating Voltage	As per board specification
Control Features	Automatic half-current mode
Protection Functions	Over-current protection, low-voltage shutdown, over-temperature shutdown
Applications	CNC machines, automation systems, and general industrial motor control

## Key Features:

- Economical and stable performance
- High reliability with strong noise immunity
- Adjustable output current and microstepping modes
- Integrated protection mechanisms for enhanced safety