

PIR MOTION SENSOR

(PASSIVE INFRARED)



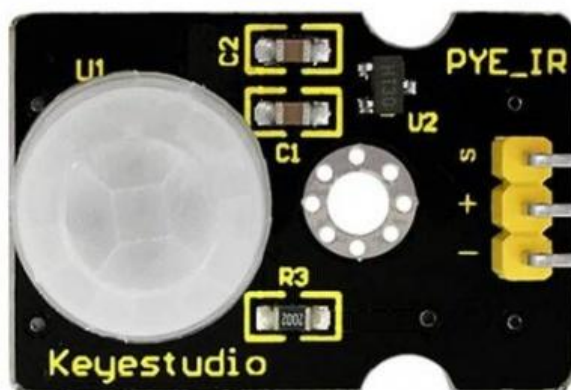
The Pyroelectric infrared motion sensor can detect infrared signals from a moving person or moving animal, and output a switching signal.

This sensor integrates an integrated digital pyroelectric infrared sensor, and the connection pins.

It features higher reliability, lower power consumption and simpler peripheral circuit.

FEATURES

- Input Voltage: 3.3 ~ 5VDC
- Working Current: 15uA
- Working Temperature: -20 ~ 85 °C
- Output Voltage: High 3V, Low 0V
- Output Delay Time (High Level): About 2.3 to 3 Seconds
- Detection Angle: 100°
- Detection Distance: 7 meters



signal pin
(connect to power
input digital port)

power positive pin
(input 3.3-5V)

GND