



keyestudio



KS0352 Keyestudio KEYBOT Programmable Robot 3-way Line Tracking Sensor

Introduction:

This Keyestudio three-way tracking sensor needs to be used together with the EASY plug Control board V2.0. The module is connected to the SPI interface with only one wire, which is very convenient and simple. The module comes with two round holes, easy to fix it on other devices.

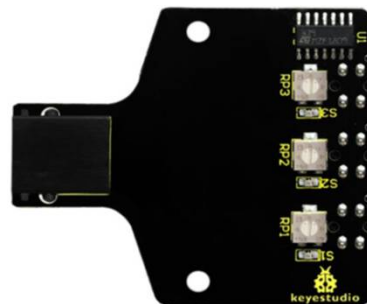
It is also an infrared sensor. The component used here is TCRT5000 infrared tube. The working principle is to use the different reflectivity of infrared light to color, converting the strength of the reflected signal into a current signal.

Specification:

Supply Voltage: 3.3-5V

Current: >20mA

Interface: Digital



More info at KEYESTUDIO

https://wiki.keyestudio.com/KS0352_Keyestudio_KEYBOT_Programmable_Robot_3-way_Line_Tracking_Sensor

Copyright © 2008-2020 keyestudio.com. All Rights Reserved

<http://www.keyestudio.com>



keyestudio

