

# Illuminated Pushbutton Switches



## DESCRIPTION (FROM B1850 TO B1855)

### B1850 A A



2. Signal	A	B	C	D
Contact Blocks	1NO1NC	2NO2NC	3NO3NC	4NO4NC

3. Signal	A	B	C	D
Rating	125V4A	250V4A	24V1A	12V1A

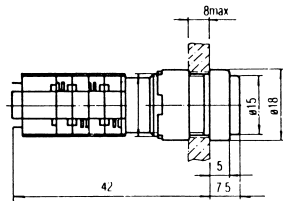
LENS COLOR : RED, BLUE, GREEN, WHITE, ORANGE

## SPECIFICATIONS

Contact resistance	15 mΩ max.
Insulation Resistance	100M Ω min. (at 500 VDC )
Dielectric Strength	1500VAC, 50/60 Hz for 1 minute
Ambient Temperature	Operating: -20°C ~ +80°C
Humidity	95% RH max.
Operation Force	150 g
Service Life	Mechanically : 1,000,000 times. Electrically : 100,000 times.
Weight	10 g (1NO1NC) 15 g (4NO4NC)

### B1850 ILLUMINATED PUSHBUTTON SWITCH ALTERNATE TYPE

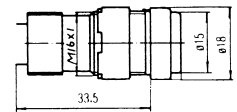
### B1851 ILLUMINATED PUSHBUTTON SWITCH MOMENTARY TYPE



### B1858 A / B / C / D INDICATOR LIGHT

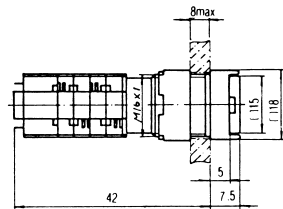
Signal	A	B	C	D
Rating	125V	250V	24V	12V

LENS COLOR: RED BLUE GREEN ORANGE



### B1852 ILLUMINATED PUSHBUTTON SWITCH ALTERNATE TYPE

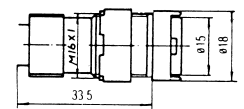
### B1853 ILLUMINATED PUSHBUTTON SWITCH MOMENTARY TYPE



### B1859 A / B / C / D INDICATOR LIGHT

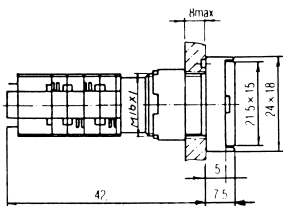
Signal	A	B	C	D
Rating	125V	250V	24V	12V

LENS COLOR: RED BLUE GREEN ORANGE



### B1854 ILLUMINATED PUSHBUTTON SWITCH ALTERNATE TYPE

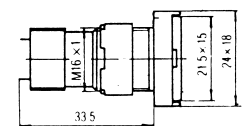
### B1855 ILLUMINATED PUSHBUTTON SWITCH MOMENTARY TYPE



### B1860 A / B / C / D INDICATOR LIGHT

Signal	A	B	C	D
Rating	125V	250V	24V	12V

LENS COLOR: RED BLUE GREEN ORANGE



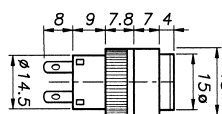
### B1856 B / C / D ILLUMINATED PUSHBUTTON SWITCH ALTERNATE TYPE

### B18561 B / C / D ILLUMINATED PUSHBUTTON SWITCH MOMENTARY TYPE

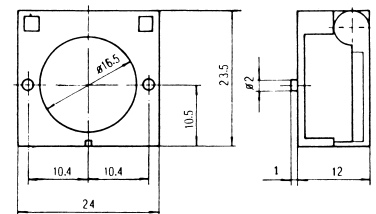
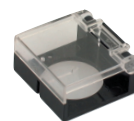


Signal	B	C	D
Rating	250V3A	24V3A	12V5A

LENS COLOR: RED BLUE GREEN ORANGE WHITE



### B1890 SWITCH GUARD



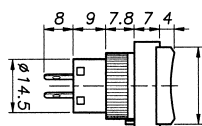
### B1857 B / C / D ILLUMINATED PUSHBUTTON SWITCH ALTERNATE TYPE

### B18571 B / C / D ILLUMINATED PUSHBUTTON SWITCH MOMENTARY TYPE



Signal	B	C	D
Rating	250V3A	24V3A	12V5A

LENS COLOR: RED BLUE GREEN ORANGE WHITE



### B1891 SEALING CAP

