

**SPECIFICATIONS:**

Current Rating: 3A  
 Contact Resistance: 20m Ω Max.  
 Insulation Resistance: 1000M Ω Min.  
 Withstanding Voltage: 1000 VAC for 1min.  
 Temperature Range: -40°C to +105°C

**MATERIAL:**

Contact : Brass, Gold flash  
 Insulator: PBT, UL94V-0

**ORDER INFORMATION**

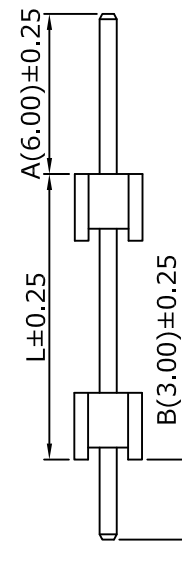
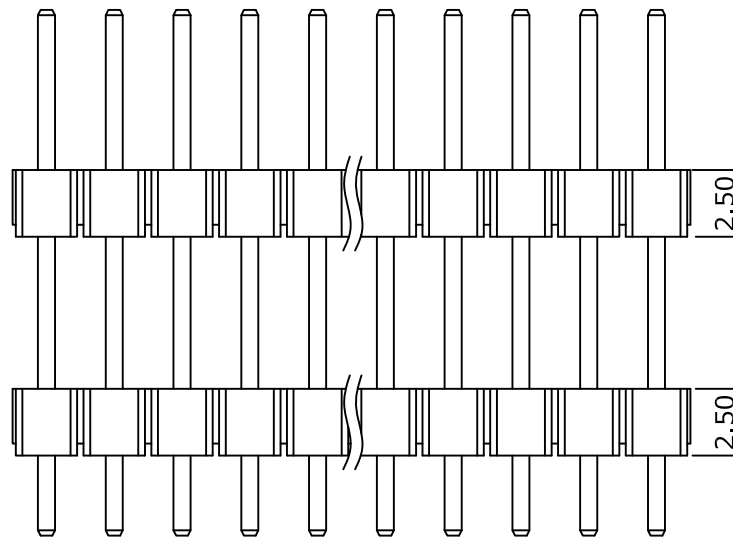
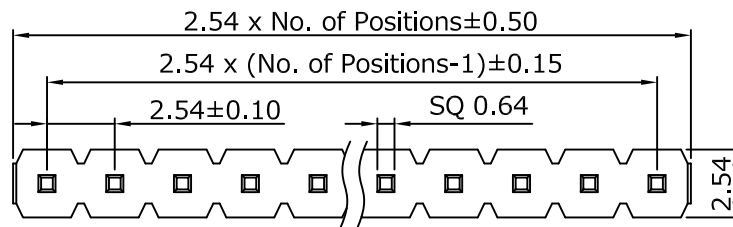
P    D    25    25    X    1    A/L/B - 1    XX - S

Stack Straight Type    Height=2.5mm    PBT    Customer Design Dimension    No. of Contacts Per Row (02~50)

Pitch 2.54mm

G0:Gold Flash	S0:Selective Flash
G1:Gold 3u"	S1:Selective 3u"
G2:Gold 5u"	S2:Selective 5u"
G3:Gold 10u"	S3:Selective 10u"
G4:Gold 15u"	S4:Selective 15u"
G5:Gold 30u"	S5:Selective 30u"

Single Row



Recommended PCB Layout  
 (PCB TOLERANCE ±0.05)

**M** Morecrafts Technology  
 TEL: +886-2-2966-1326  
 FAX: +886-2-2966-1352  
 www.morecrafts.com.tw

PART NO.	PD2525X1 A/L/B-1XX-S	DRAWN	Andrew
DRAWING NO.	PD2525X1 A/L/B-1XX-S	CHECKED	Claudia
DATE	2019/10/01	APPROVED	Brian

TITLE:	Pin Header 2.54 H=2.5mm	REV.	A0
TOLERANCE	.X ±0.25 .XX ±0.20	SCALE	1:1
UNIT	mm		