

Model: SCT013-000

Characteristics:

Opening size 13mmx13mm, compatible to foreign products, leading wire 1 metre, standard $\Phi 3.5$ three core plug output, current & voltage two types of output. (Patent No. ZL 2015 3 0060067.X)



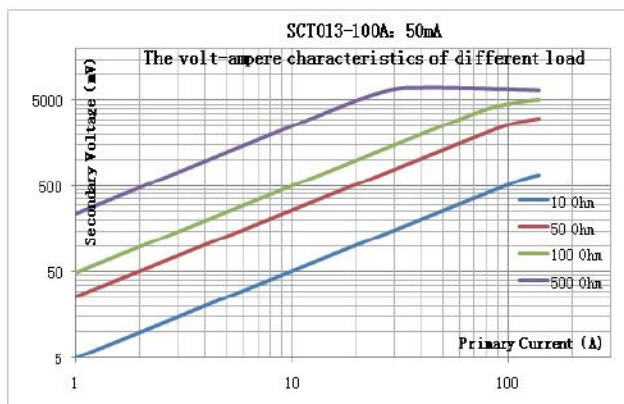
Technical index:

Suspended mounting, leading wire output
 Standard: GB1208-2006
 Operating temperature: $-25^{\circ}\text{C} \sim +70^{\circ}\text{C}$
 Storage temperature: $-30^{\circ}\text{C} \sim +90^{\circ}\text{C}$
 Work voltage: 720V
 Frequency range: 50Hz-1KHz
 Dielectric strength: 3.5KV 50Hz 1min

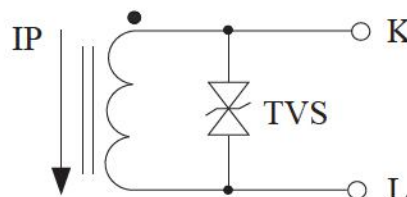
Electric parameters:

Rated input(rms)	100	A
Max.Input	120	A
Rated output	50	mA
Turns ratio	1:2000	
Accuracy	± 1	%
Linearity	≤ 0.2	%
Phase error		
max:Sampling resistance	10	Ω
Weight	50	g

Characteristic curve in different load volt-ampere:

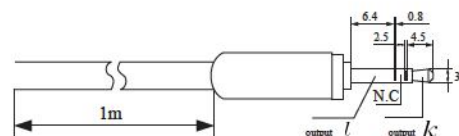
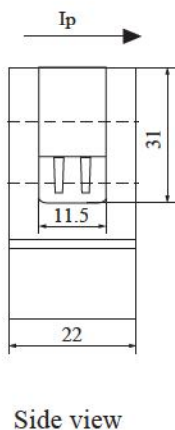
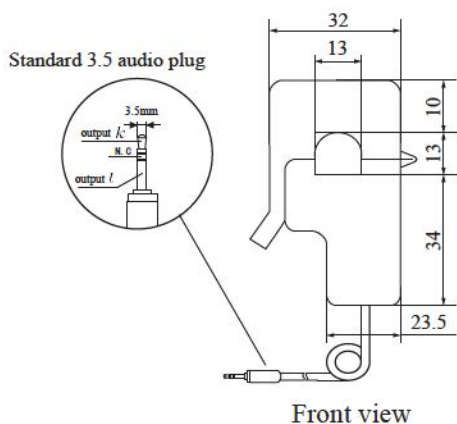


Schematic diagram:



Built-in two-way protection diode
 Current output type

Dimensions (in mm):



Standard three core plug schematic diagram