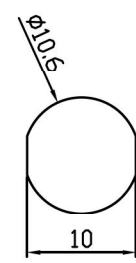
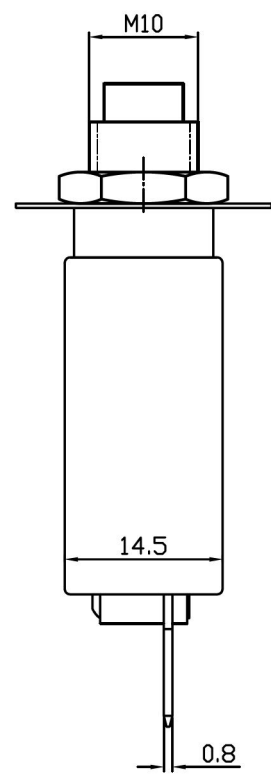
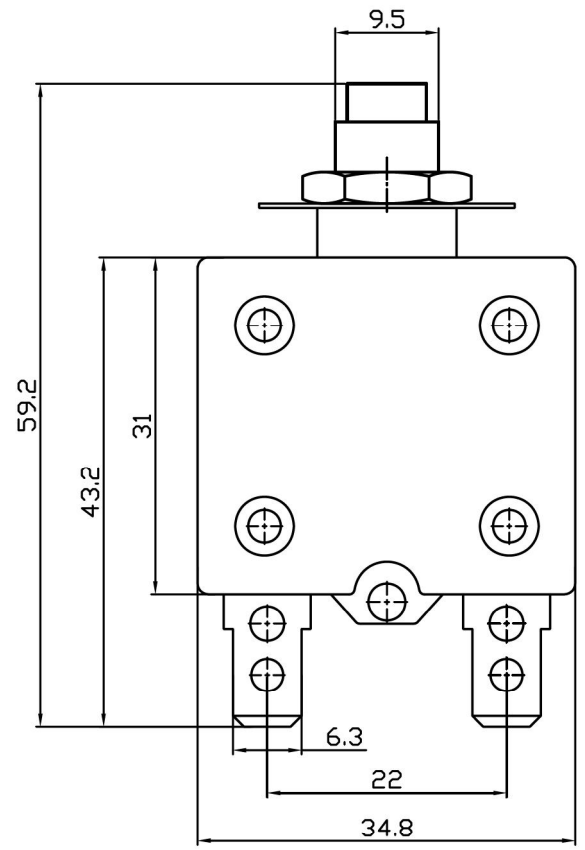


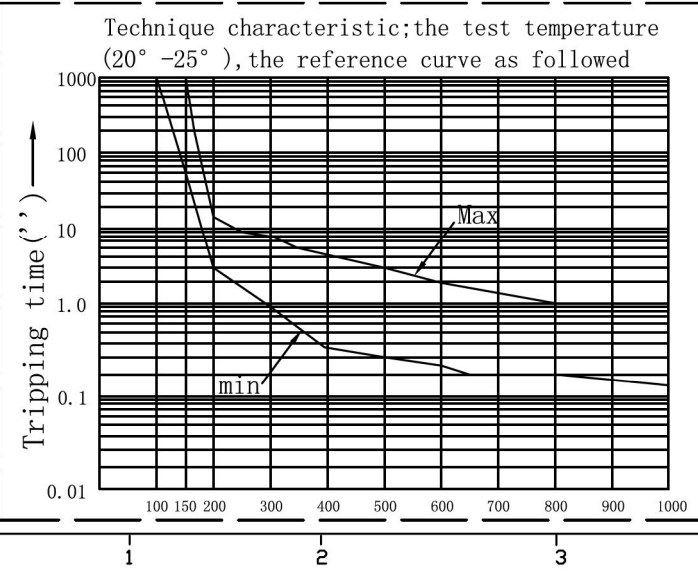
H  
G  
F  
E  
D  
C  
B  
A



安装面板尺寸  
PANEL CUT-OUT

### Specification

- 1) Rating current: min. 5A, max. 50A
- 2) Working voltage: 125/250VAC Or 32VDC
- 3) Application: household appliance and electrical motor
- 4) Insulated resistance:  $\geq 100M\Omega$
- 5) Dielectric strength:  $\geq 1500VAC/1min$
- 6) Electrical Life:  $\geq 10,000$  Time



The experiment of short-circuit. ambient temperature: 25°

current overload rating current	PCT	Tnipping time
105%		1hour no tnipping
150%		1hour tnipping
200%		7.0-80''
300%		0.8-15''
400%		0.35-5''
500%		0.3-2.8''
600%		0.25-2''
800%		0.2-1''
1000%		0.15-0.8''

版本	标示	更改描述		
产品型号: ST-2		产品料号: ST-2		
产品系列 Rocker switch	制图:	审核:	核准:	
图纸比例: 1:1.5	日期: 2016.4.1	日期: 2016.4.1	日期: 2016.4.1	
若没有特别标示, 公差依照以下要求: X. =±0.5 .X=±0.30 .X=±0.15 <math>\angle = \pm 2^\circ</math> (单位: mm)				 (第一视角法)
 乐清市戴尔电子有限公司 YUEQING DAIER ELECTRON CO., LTD				

8 9 10